

C-Style Close Quarters Copper Tubing Cutter

RIDGID



NEW

RIDGID C-Style cutters cut 15/22 or 28 mm copper tubing while offering unique features that take copper tube cutting to a whole new level.

- Snap-on feature for a quick pipe connection and no size adjustment, saving valuable time.
- Spring loaded cutter wheel provides a constant pressure on pipe providing fast and straight cuts every time.
- RIDGID's X-CEL® Wheel Pin for quick wheel replacement.
No tools or disassembly of the housing required.
- Model C15/22 is the world's first size dedicated C-Style cutter to cut both 15 and 22 mm copper tubing with the unique "quick size change" feature.
- Unique screwdriver slots in the housing provide the extra leverage for making the cut in extreme tight spaces.

**2 Sizes
in 1**

SPECIFICATIONS



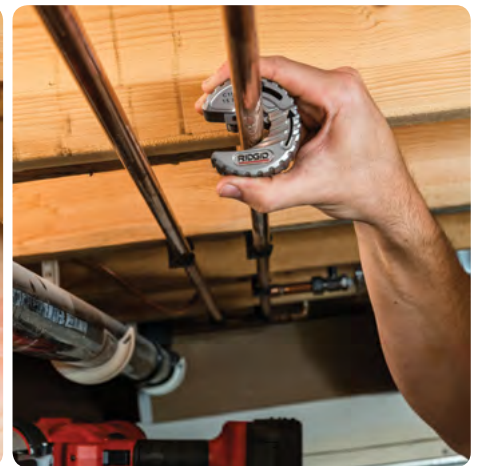
| | | |
|---------------------------------|------------|---------|
| Cat. No | 57018 | 60668 |
| Model No | C15/22 | C28 |
| Capacity | 15 & 22 mm | 28 mm |
| Unit weight | 0,23 kg | 0,21 kg |
| X-CEL Pin | • | • |
| Snap-on Quick connection | • | • |
| Screwdriver slots | • | • |
| Quick size change | • | |

ORDER INFORMATION

| Cat. No | Model No | Description | Weight / Kg |
|---------|----------|---|-------------|
| 57018 | C15/22 | 15 & 22 mm C-Style copper tubing cutter | 0.23 |
| 60668 | C28 | 28 mm C-Style copper tubing cutter | 0.21 |
| 57028 | E-3410 | E-3410 Replacement wheel | 0.04 |



For more details visit
RIDGID.com/warranty



RIDGID® reserves the right to change design and specification of our products without notification or alteration of literature. For the complete selection of the Ridge Tool product line, please refer to the RIDGID® Tool Catalog or RIDGID.com.

© 2018 RIDGID, Inc. The Emerson logo and RIDGID logo are registered trademarks of Emerson Electric Co. or RIDGID, Inc. in the U.S. and other countries. All other trademarks belong to their respective holders.

DISTRIBUTOR

RIDGID

Ridge Tool Europe N.V.
 IZ Schurhovenveld 4820
 3800 Sint-Truiden,
 Belgium

Tel: +32 (0) 11 598 630
 Fax: +32 (0) 11 598 631
ridgid.africa@emerson.com
RIDGID.com