

SeekTech™ SR-20 / SR-24 LE Line Locators

RIDGID®



CONFIDENCE BUILDER.

FINDS IT SO YOU DON'T HIT IT.

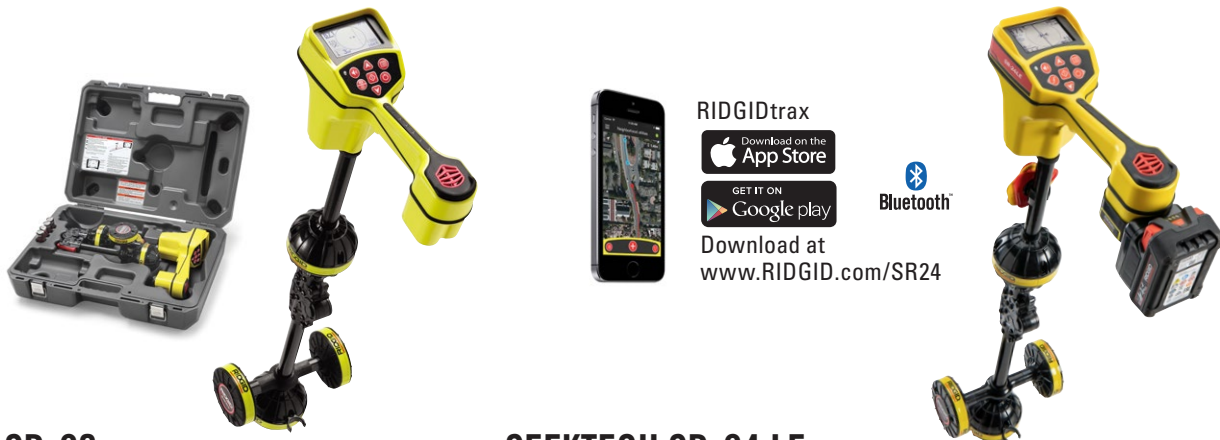
RIDGID® locators give you the industry's only omnidirectional mapping. View real-time data on location, direction and depth. Track and find hard-to-locate underground utilities fast.

RIDGID.COM/LOCATE

*Locate underground
utility lines with speed,
accuracy and confidence*

TRACE ANY FREQUENCY FROM 10 Hz TO 35 kHz

RIDGID locating receivers feature an easy-to-use visual mapping display that allows you to locate utility lines and sondes/beacons with confidence. Use with a SeeSnake camera equipped with a sonde transmitter to locate the camera head during an inspection or use with a line transmitter to find buried utilities.



SEEKTECH SR-20 LOCATOR

- Locate underground utility lines with speed, accuracy and confidence. A lightweight yet rugged locator that provides all the information needed for faster, more accurate locates.
- Target line and guidance arrows quickly identify distortion.
 - Proximity signal and signal strength help work through difficult locates.
 - Can trace any frequency from 10 Hz to 35,000 Hz.
 - Meets FCC Class A and EN 55022 Class A requirements.

SEEKTECH SR-24 LE LOCATOR

- Our Line Locator with Bluetooth® LE & GPS functionality. The SR-24 LE is a precision utility locating instrument with GPS and Bluetooth® LE technology for easy integration with external data capture devices.
- Built-In GPS track location coordinates for mapping and GIS applications.
 - Data Output feature saves the locate data to an SD card, or sends to a Bluetooth device if one is available, or to both simultaneously. Bluetooth® LE technology streams data to smartphones, tablets, or high-precision GPS instruments.
 - Smartphone/Tablet App map multiple tracks and waypoints and export to GIS software.
 - 18 V Battery Adapter included to allow using a rechargeable Li-Ion battery.

	SeekTech SR-20	SeekTech SR-24 LE
Bluetooth® LE & GPS	No	Yes
Omni-Directional Mapping Display	Yes	Yes
User Programmable Frequencies	30 user definable, 10 Hz to 35 kHz	30 user definable, 10 Hz to 35 kHz
Active Frequencies		
Default	128 Hz; 1 kHz; 8 kHz; 33 kHz	128 Hz; 1 kHz; 8 kHz; 33 kHz
Passive Frequencies		
Default	50 Hz ^{x9} ; < 4 kHz	50 Hz ^{x9} ; < 4 kHz
Power Preprogrammed	50 Hz; 50 Hz ^{x5} ; 50 Hz ^{x9} ; 60 Hz; 60 Hz ^{x5} ; 60 Hz ^{x9} ; 100 Hz; 120 Hz	50 Hz; 50 Hz ^{x5} ; 50 Hz ^{x9} ; 60 Hz; 60 Hz ^{x5} ; 60 Hz ^{x9} ; 100 Hz; 120 Hz
Radio Frequency Broadband	4 kHz – 15 kHz; > 15 kHz	4 kHz –15 kHz; > 15 kHz
Omni-Seek® Broadband Modes (All three simultaneously)	< 4 kHz; 4 kHz-15 kHz; > 15 kHz	< 4 kHz; 4 kHz –15 kHz; > 15 kHz
Sonde Mode		
Default	512 Hz	512 Hz
Preprogrammed	16 Hz; 640 Hz; 850 Hz; 8 kHz; 16 kHz; 33 kHz	16 Hz; 640 Hz; 850 Hz; 8 kHz; 16 kHz; 33 kHz
Depth	Continuous	Continuous
Current Measurement	Continuous	Continuous
Distortion Indication On One Screen	Yes	Yes
18 V Battery Adapter	Optional	Included

RIDGID TRANSMITTERS

RIDGID® offers a range of transmitters for tracing underground metallic pipes and cables. All RIDGID transmitters generate a signal onto the buried cable in one of three ways:

- Direct Connection;
- Induction;
- Induction with the optional inductive signal clamp.



	ST-510	ST-305
Bluetooth®	No	No
Digital Display	Yes	No
Line Trace & Induction Frequencies	128 Hz; 1 kHz; 8 kHz; 33 kHz; 93 kHz Pre-set Competitor Frequencies Available	1 kHz; 8 kHz; 33 kHz; 93 kHz
Simultaneous Transmit 2 Line Frequencies	No	Yes
Max Power Output	10 W (8 D-cell Batteries)	5 W (6 C-cell batteries)
Power Settings	4 mA, 15 mA, 50 mA, 150 mA, 600 mA	25 mA to 5 W



RIDGID SEEKTECH INDUCTIVE SIGNAL CLAMP ACCESSORY

COMPATIBLE WITH ALL RIDGID TRANSMITTERS
The RIDGID SeekTech Inductive Signal Clamp lets you apply a signal to a cable or pipe when direct connection is not possible.



RIDGID NAVITRACK® BATTERY SONDE

Remote Sonde can be attached to a drain cleaning cable or a water jet hose to locate the Sonde in a line. Battery-powered 512 Hz signal. Flashing LED indicates that sonde is transmitting.



18 V ADAPTOR

The RIDGID® SeekTech® Locator 18 V Adaptor provides a versatile power option which could reduce long term battery costs. Attach the adaptor to the SeekTech SR-20, SR-24 LE, or NaviTrack Scout to enable long-lasting use. The adaptor easily fits into the alkaline battery cavity, providing a flexible power option.

ORDERING INFORMATION

Catalog No.	Model No.	Description	Weight	
			lb	kg
76898	SeekTech SR-24 LE	Line Locator with Bluetooth® LE and GPS (Includes Case, Battery Adapter)	4.1	1,9
21943	SeekTech SR-20	Line Locator (Includes Case)	4.0	1,8
19243	NaviTrack Scout®	Plumbing & Line Locator (Includes Case)	3.0	1,4

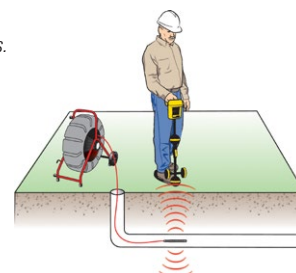
Catalog No.	Model No.	Description	Weight	
			lb	kg
21953	SeekTech ST-510	Transmitter (10 Watts)	8.0	3,4
21948R	SeekTech ST-305	Transmitter (5 Watts)	2.5	1,9
16728	Battery Sonde	Remote Transmitter (512 Hz)	0.4	0,1

Catalog No.	Description	Weight	
		lb	kg
72963	SeekTech 4" (100 mm) Inductive Signal Clamp	2.0	0,9
66503	Locator 18 V Battery Adaptor (excl. Battery)	4.0	1,8
45433	Set of (2) 18 V 5.0 Ah Lithium Batteries and (1) 230 V Charger	6.0	2,5
56518	18 V 5.0 Ah Lithium Battery	2.0	0,7

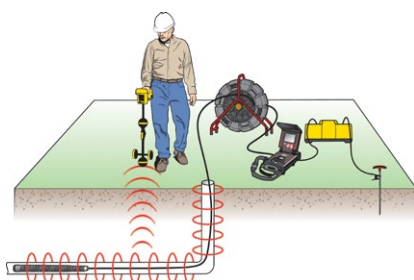
Induce a signal to locate utilities.



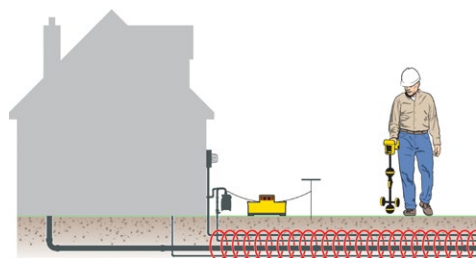
Find sondes/beacons.



Find plastic pipe with integral line trace.



Direct connect to utility lines.



DISTRIBUTOR



Register your tool on
RIDGID Link™ App

LET'S KEEP IN TOUCH • RIDGID.EU/SIGNUP



RIDGID® reserves the right to change design and specification of our products without notification or alteration of literature.
For the complete selection of the Ridge Tool product line, please refer to the RIDGID® Tool Catalog or RIDGID.com.

© 2023. RIDGID and the Emerson logo are registered trademarks of Emerson Electric Co. or its subsidiaries in the U.S. and other countries. Any other trademarks belong to their respective holders.

RIDGID

Ridge Tool Europe N.V.
Ondernemerslaan 5428
B-3800 Sint-Truiden
Belgium

Tel.: +32 (0)11 598 620
RIDGID.eu@emerson.com
RIDGID.com

EMERSON

FY2071TA_EN