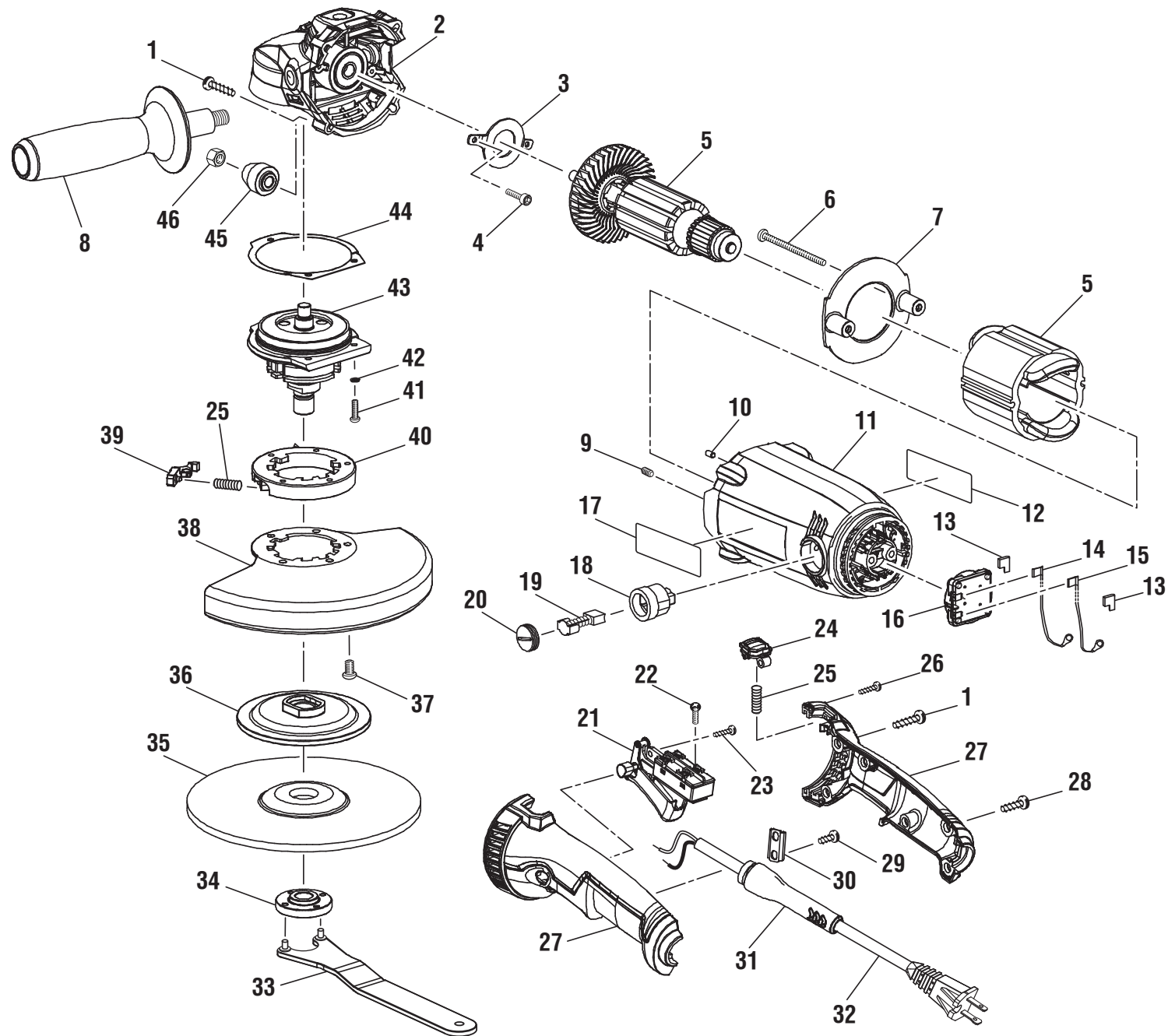


**RIDGID
R1020/R10201 ANGLE GRINDER
REPAIR SHEET**

**RIDGID
MEULEUSE D'ANGLE R1020/R10201
FEUILLE DE RÉPARATION**

**RIDGID
AMOLADORA ANGULAR R1020/R10201
LISTA DE PIEZAS DE REPUESTO**



▲ WARNING: The assembly shown represents an important part of the Double Insulated System. To avoid the possibility of alteration or damage to the System, service should be performed by your nearest authorized service center.

▲ AVERTISSEMENT : L'ensemble illustré représente une partie importante du système à isolation double. Afin d'éviter la possibilité de modification ou de dommage au système, la réparation ne doit être effectuée que par votre centre de réparation centre commercial autorisé.

▲ ADVERTENCIA: El conjunto que se ilustra representa una parte importante del Sistema de Aislamiento Doble. Para evitar la posibilidad de alteración o daño del sistema, la reparación debe ser efectuada en su centro de servicio autorizado.

RIDGID® R1020

| KEY | P/N | DESCRIPTION | QTY | PIÈCE | RÉF. | DESCRIPTION | QTE | REF. | N/P | DESCRIPCIÓN | CANT. |
|-----|-----------|---------------------------------------|-----|-------|-----------|--|-----|------|-----------|---|-------|
| 1 | 661075001 | SCREW (M5 x 28 mm, TORX)..... | 5 | 1 | 661075001 | VIS (M5 x 28 mm, TORX)..... | 5 | 1 | 661075001 | TORNILLO (M5 x 28 mm, TORX)..... | 5 |
| 2 | 300114031 | GEAR HOUSING ASSEMBLY (R1020)..... | 1 | 2 | 300114031 | CARTER D'ENGRENAGES (R1020)..... | 1 | 2 | 300114031 | CONJ. CAJA ENGRANAJES (R1020)..... | 1 |
| | 300114037 | GEAR HOUSING ASSEMBLY (R10201)..... | 1 | | 300114037 | CARTER D'ENGRENAGES (R10201)..... | 1 | | 300114037 | CONJ. CAJA ENGRANAJES (R1021)..... | 1 |
| 3 | 632130001 | BEARING RETAINER..... | 1 | 3 | 632130001 | RETENUE DE ROULEMENT..... | 1 | 3 | 632130001 | RETÉN DEL COJINETE..... | 1 |
| 4 | 661061001 | SCREW (M4 x 16 mm, HEX SOC. HD.)..... | 2 | 4 | 661061001 | VIS (M4 x 16 mm, À TÊTE CREUSE HEXAGONALE)..... | 2 | 4 | 661061001 | TORNILLO (M4 x 16 mm, CAB. HUE. HEX.)..... | 2 |
| 5 | 200216041 | "V" Motor ASSEMBLY..... | 1 | | | ENSEMBLE DE MOTEUR (V)..... | 1 | | 200216041 | CONJ. DEL MOTOR "V"..... | 1 |
| 6 | 661076001 | SCREW (M4 x 76 mm)..... | 2 | 5 | 200216041 | ENSEMBLE DE MOTEUR (V)..... | 1 | 5 | 661076001 | TORNILLO (M4 x 76 mm)..... | 2 |
| 7 | 515884001 | FAN BAFFLE..... | 1 | 6 | 661076001 | VIS (M4 x 76 mm)..... | 2 | 6 | 515884001 | DEFLECTOR DEL VENTILADOR..... | 1 |
| 8 | 300160017 | SIDE HANDLE ASSEMBLY..... | 1 | 7 | 515884001 | DÉFLECTEUR DU VENTILATEUR..... | 1 | 7 | 300160017 | CONJ. DEL MANGO LATERAL..... | 1 |
| 9 | 660067002 | SET SCREW (M4.5)..... | 2 | 8 | 300160017 | POIGNÉE LATÉRALE..... | 1 | 8 | 660067002 | TORNILLO DE FIJACIÓN (M4,5)..... | 2 |
| 10 | 550339001 | RUBBER PLUG..... | 1 | 9 | 660067002 | VIS D'ARRÊT (M4,5)..... | 2 | 9 | 550339001 | TAPÓN DE GOMA..... | 1 |
| 11 | 515886001 | MOTOR HOUSING..... | 1 | 10 | 550339001 | BOUCHON DE CAOUTCHOUC..... | 1 | 10 | 515886001 | ALOJAMIENTO DEL MOTOR..... | 1 |
| 12 | 940045226 | DATA LABEL..... | 1 | 11 | 515886001 | BOÎTIER DU MOTEUR..... | 1 | 11 | 940045226 | ETIQUETA DE DATOS..... | 1 |
| 13 | 560199002 | TERMINAL SLEEVE..... | 2 | 12 | 940045226 | PLAQUETTE SIGNALÉTIQUE..... | 1 | 12 | 560199002 | MANGA DEL TERMINAL..... | 2 |
| 14 | 290061100 | BLACK LEAD W/TERMINAL..... | 1 | 13 | 560199002 | MANCHON DE BORNE..... | 2 | 13 | 290061100 | CONDUCTOR CON TERMINAL NEGRO..... | 1 |
| 15 | 290061101 | WHITE LEAD W/TERMINAL..... | 1 | 14 | 290061100 | FIL AVEC BORNE NOIR..... | 1 | 14 | 290061101 | CONDUCTOR CON TERMINAL BLANCO..... | 1 |
| 16 | 302201001 | ROTATING CONTACT ASSEMBLY..... | 1 | 15 | 290061101 | FIL AVEC BORNE BLANC..... | 1 | 15 | 302201001 | CONJ. ELEMENTO DE CONTACTO GIRATORIO..... | 1 |
| 17 | 940114205 | LOGO LABEL..... | 1 | 16 | 302201001 | GROUPE CONTACT ROTATIF..... | 1 | 16 | 940114205 | ETIQUETA LOGOTIPO..... | 1 |
| 18 | 513101001 | BRUSH HOLDER..... | 2 | 17 | 940114205 | AUTOCOLLANT DE LOGO..... | 1 | 17 | 513101001 | PORTAESCOBILLA..... | 2 |
| 19 | 290069160 | BRUSH ASSEMBLY..... | 2 | 18 | 513101001 | PORTE-BALAI..... | 2 | 18 | 290069160 | CONJ. DE LA ESCOBILLA..... | 2 |
| 20 | 512010001 | BRUSH HOLDER CAP..... | 2 | 19 | 290069160 | BALAI..... | 2 | 19 | 512010001 | TAPA DE ESCOBILLA..... | 2 |
| 21 | 760396006 | SWITCH..... | 1 | 20 | 512010001 | COUVERCLE DE BALAI..... | 2 | 20 | 760396006 | INTERRUPTOR..... | 1 |
| 22 | 661037001 | SCREW (M3.5 x 7 mm)..... | 4 | 21 | 760396006 | INTERRUPTEUR..... | 1 | 21 | 661037001 | TORNILLO (M3,5 x 7 mm)..... | 4 |
| 23 | 6627201 | SCREW (M4 x 14 mm)..... | 1 | 22 | 661037001 | VIS (M3,5 x 7 mm)..... | 4 | 22 | 6627201 | TORNILLO (M4 x 14 mm)..... | 1 |
| 24 | 515889001 | HANDLE LOCK BUTTON..... | 1 | 23 | 6627201 | VIS (M4 x 14 mm)..... | 1 | 23 | 515889001 | BOTON DE SEGURO DEL MANGO..... | 1 |
| 25 | 672592001 | SPRING..... | 2 | 24 | 515889001 | BOUTON DE VERROU DE LA POIGNÉE... 1 | 1 | 24 | 672592001 | RESORTE..... | 2 |
| 26 | 660230011 | SCREW (M3 x 10 mm)..... | 1 | 25 | 672592001 | RESSORT..... | 2 | 25 | 660230011 | TORNILLO (M3 x 10 mm)..... | 1 |
| 27 | 201118001 | HANDLE ASSEMBLY (R1020)..... | 1 | 26 | 660230011 | VIS (M3 x 10 mm)..... | 1 | 26 | 201118001 | CONJUNTO DEL MANGO (R1020)..... | 1 |
| | 305679001 | HANDLE ASSEMBLY (R10201)..... | 1 | 27 | 201118001 | ENSEMBLE DE POIGNÉE (R1020)..... | 1 | 27 | 305679001 | CONJUNTO DEL MANGO (R10201)..... | 1 |
| 28 | 661075002 | SCREW (M5 x 16 mm, TORX)..... | 5 | 28 | 661075002 | VIS (M5 x 16 mm, TORX)..... | 5 | 28 | 661075002 | TORNILLO (M5 x 16 mm, TORX)..... | 5 |
| 29 | 660065006 | SCREW (8-16 x 1/2 in.)..... | 2 | 29 | 660065006 | VIS (8-16 x 1/2 po)..... | 2 | 29 | 660065006 | TORNILLO (8-16 x 1/2 pulg.)..... | 2 |
| 30 | 690339003 | CORD CLAMP..... | 1 | 30 | 690339003 | RETENUE DE CORDON..... | 1 | 30 | 690339003 | ABRAZADERA DEL CORDÓN..... | 1 |
| 31 | 560988001 | BEND RELIEF..... | 1 | 31 | 560988001 | ENCOCHE DE PLIAGE..... | 1 | 31 | 560988001 | PROTECTOR DEL CORDÓN..... | 1 |
| 32 | 730387036 | POWER CORD..... | 1 | 32 | 730387036 | CORDON D'ALIMENTATION..... | 1 | 32 | 730387036 | CORDÓN DE CORRIENTE..... | 1 |
| 33 | 632223001 | SPANNER WRENCH..... | 1 | 33 | 632223001 | CLÉ À ERGOTS..... | 1 | 33 | 632223001 | LLAVE DE GANCHO..... | 1 |
| 34 | 671701002 | CLAMP NUT..... | 1 | 34 | 671701002 | ÉCROU DE SERRAGE..... | 1 | 34 | 671701002 | TUERCA DE PRESION..... | 1 |
| 35 | 901964001 | 7 in. GRINDING WHEEL..... | 1 | 35 | 901964001 | MEULE, 7 po..... | 1 | 35 | 901964001 | MUELA ABRASIVA, 7 pulg..... | 1 |
| 36 | 672503001 | BACKING FLANGE..... | 1 | 36 | 672503001 | FLASQUE DE SUPPORT..... | 1 | 36 | 672503001 | BRIDA DE APOYO..... | 1 |
| 37 | 660151006 | SCREW (M5 x 10 mm)..... | 5 | 37 | 660151006 | VIS (M5 x 10 mm)..... | 5 | 37 | 660151006 | TORNILLO (M5 x 10 mm)..... | 5 |
| 38 | 632071001 | GUARD (R1020)..... | 1 | 38 | 632071001 | PROTECTION (R1020)..... | 1 | 38 | 632071001 | PROTECCIÓN (R1020)..... | 1 |
| | 632071003 | GUARD (R10201)..... | 1 | | 632071003 | PROTECTION (R10201)..... | 1 | | 632071003 | PROTECCIÓN (R10201)..... | 1 |
| 39 | 641457001 | GUARD LEVER (R1020)..... | 1 | 39 | 641457001 | LEVIER DU GARANT (R1020)..... | 1 | 39 | 641457001 | PALANCA DE PROTECCIÓN (R1020)..... | 1 |
| | 641457003 | GUARD LEVER (R10201)..... | 1 | | 641457003 | LEVIER DU GARANT (R10201)..... | 1 | | 641457003 | PALANCA DE PROTECCIÓN (R10201)..... | 1 |
| 40 | 515885001 | SPACER..... | 1 | 40 | 515885001 | ENTRETOISE..... | 1 | 40 | 515885001 | SEPARADOR..... | 1 |
| 41 | 660383008 | SCREW (M4 x 16 mm, TORX)..... | 3 | 41 | 660383008 | VIS (M4 x 16 mm, TORX)..... | 3 | 41 | 660383008 | TORNILLO (M4 x 16 mm, TORX)..... | 3 |
| 42 | 681022001 | LOCK WASHER (M4)..... | 3 | 42 | 681022001 | RONDELLE FREIN (M4)..... | 3 | 42 | 681022001 | ARANDELA DE SEGURIDAD (M4)..... | 3 |
| 43 | 300003098 | OUTPUT SHAFT ASSEMBLY (R1020)..... | 1 | 43 | 300003098 | ARBRE DE SORTIE (R1020)..... | 1 | 43 | 300003098 | CONJUNTO DEL EJE DE SALIDA (R1020)..... | 1 |
| | 300003112 | OUTPUT SHAFT ASSEMBLY (R10201)..... | 1 | | 300003112 | ARBRE DE SORTIE (R10201)..... | 1 | | 300003112 | CONJUNTO DEL EJE DE SALIDA (R10201)..... | 1 |
| 44 | 902032002 | GASKET..... | 1 | 44 | 902032002 | GARNITURE..... | 1 | 44 | 902032002 | JUNTA..... | 1 |
| 45 | 610856001 | BEVEL PINION..... | 1 | 45 | 610856001 | PIGNON BISEAUTÉ..... | 1 | 45 | 610856001 | PIÑÓN BISELADO..... | 1 |
| 46 | 690551001 | HEX NUT (M8)..... | 1 | 46 | 690551001 | ÉCROU HEXAGONAL (M8)..... | 1 | 46 | 690551001 | TUERCA HEXAGONAL (M8)..... | 1 |
| | 987000290 | OPERATOR'S MANUAL..... | 1 | | 987000290 | MANUEL D'UTILISATION..... | 1 | | 987000290 | MANUAL DEL OPERADOR..... | 1 |

(REV:06)

RIDGID

R1020

