

RIDGID PRESSING RANGE

A SUPPORT GUIDE FOR
► RIDGID STRUTSLAYR

BY EVELYNN VERDYCK – MARCH 2024

©2019, RIDGID, Inc. The Emerson logo and RIDGID logo are registered trademarks of Emerson Electric Co. or RIDGID, Inc. in the U.S. and other countries. All other trademarks belong to their respective holders.



Launch Product
Information



Product Selection Aids



Order information



STRUTSLAYR IS CAPABLE OF CUTTING MANY DIFFERENT BRANDS
THROUGHOUT EUROPE - PLEASE REFER TO RIDGID TECHNICAL HELP /
CUSTOMER SERVICE FOR SUPPORT. WHEN IN DOUBT ALWAYS CONTACT
STRUT MANUFACTURER.

ALL STRUT SPECS & THE RIDGID STRUTSLAYR SPECIFICATIONS ARE
SUBJECT TO CHANGES WITHOUT PRIOR NOTICE. ALWAYS CHECK ORIGINAL
SPECIFICATIONS & PAY ATTENTION WHEN USING THE STRUTSLAYR.

**WE CANNOT BE HELD ACCOUNTABLE FOR THE INFORMATION
DISCLOSED HEREIN.**

**DELIVER A QUALITY, BURR-FREE
CUT IN 5 SECONDS OR LESS.**



RIDGID PRESSING | STRUTSLAYR

RIDGID



- FAB SHOP QUALITY WITH **BURR-FREE CUTS**
- CLEAN, CONSISTENT CUTS **IN 5 SECONDS OR LESS**
- SHEAR CUT = **SPARK FREE CUTS**
- **EASY TO MOVE AROUND THE JOB SITE** & MOUNTS TO RIDGID TRISTAND
- BUILT-IN MEASURING GUIDE ALLOWS **ACCURACY OF CUT ON JOB SITE**

RIDGID PRESSING | RP 350 & RP 351

RIDGID



- FORCE OUTPUT OF **32 KN**
- PRESS CAPACITY 12 to 108 MM
- **SPEED PRESS** - CYCLE TIME OF <54MM IN 3 TO 4 SECONDS, CAPABLE TO PRESS 54 MM in 5 SECONDS
- **BRUSHLESS MOTOR, ADVANCED HYDRAULIC SYSTEM** ALLOWS **100K PRESS CYCLES** WITH **NO SCHEDULED MAINTENANCE**
- SMART TOOL WITH BLUETOOTH INTEGRATION
- INFINITE SWIVEL HEAD
- COMPATIBLE WITH **STRUTSLAYR**

RIDGID PRESSING | STRUTSLAYR COMPATIBILITY

RIDGID



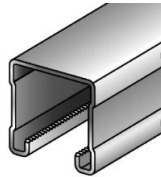
Strut of
41 x 41 mm
(Nominal)

fischer



Model: FUS 41
Thickness:
1.5 / 2.0 / 2.5 mm
Finish:
Senzimir Galvanized

HILTI



Model: MQ-41 (U/L)
Thickness:
1.5 / 2.0 / 2.5 mm
Finish:
Pre-Galvanized

MÜPRO



Model: MPR
Thickness:
1.5 / 2.0 / 2.5 mm
Finish:
Pre-Galvanized,
Hot-Dip Galvanized

Steel Sections
Cold Rolled Forming Specialists



Model: Strut Framing
Channel
Thickness:
1.5 / 2.5 mm
Finish:
Pre-Galvanized,
Hot-Dip Galvanized
Hot-Rolled Mild Steel

walraven



Model: RAPIDSTRUT 41 (L/H),
BUP1000 41 (L/H), PG41 (L/H)
Thickness:
1.5 / 2.0 / 2.5 mm
Finish:
Pre-Galvanized,
Hot-Dip Galvanized

WÜRTH



Model: VARIFIX C
Thickness:
1.5 / 2.0 / 2.5 mm
Finish:
Pre-Galvanized,
Hot-Dip Galvanized

UBS **Atkore**
Unistrut Buffalo Supports Unistrut



Model: P1000H, P1000T
Thickness:
1.5 / 2.0 / 2.5 mm
Finish:
Pre-Galvanized,
Hot-Dip Galvanized



Strut of
21 x 41 mm
(Nominal)



Model: FUS 21
Thickness:
1.5 / 2.0 / 2.5 mm



Model: MPR
Thickness:
1.5 / 2.0 / 2.5 mm
Finish:
Pre-Galvanized,
Hot-Dip Galvanized



Model: Strut Framing
Channel
Thickness:
1.5 / 2.5 mm
Finish:
Pre-Galvanized,
Hot-Dip Galvanized
Hot-Rolled Mild Steel



Model: RAPIDSTRUT 21 (L/H),
BUP1000 21 (L/H), PG21 (L/H)
Thickness:
1.5 / 2.0 / 2.5 mm
Finish:
Pre-Galvanized,
Hot-Dip Galvanized



Model: P3300T, P4000T
Thickness:
1.5 / 2.0 / 2.5 mm
Finish:
Pre-Galvanized,
Hot-Dip Galvanized

©2019, RIDGID, Inc. The Emerson logo and RIDGID logo are registered trademarks of Emerson Electric Co. or RIDGID, Inc. in the U.S. and other countries. All other trademarks belong to their respective holders.



NEVER use with Stainless Steel Strut

1.4404 / RVS 304 / SS316L



StrutSlayr is capable of cutting many different brands throughout Europe - please refer to RIDGID technical help / customer service for support. WHEN IN DOUBT always CONTACT STRUT MANUFACTURER. Strut & StrutSlayr specifications are subject to changes without prior notice. ALWAYS PAY ATTENTION WHEN USING THE STRUTSLAYR.



Avoid serious injuries and damages to the Tool, read manual and safety instructions!
Do not force damaged or deformed strut into the StrutSlayr head and do not cut

RIDGID PRESSING | STRUTSLAYR COMPATIBILITY

RIDGID



Strut of
41 x 41 mm
(Nominal)



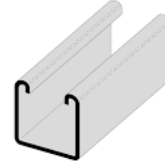
Model: Railstrut R441
Thickness:
2.0 / 2.5 mm
Finish:
Sendzimir Galvanized
Hot-Dip galvanized
Standard Finish



Model: R41S / SP
Thickness:
1.5 / 2.5 mm
Finish:
Hot-Dip Galvanized
Sendzimir Galvanized



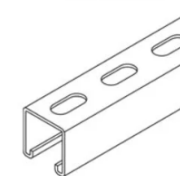
Model: Rail 41 x 41 LG
Thickness:
2.0 / 2.5 mm
Finish:
Pre-Galvanized,
Hot-Dip Galvanized



Model: Strut 41x41
Thickness:
2.5 mm
Finish:
Pre-Galvanized,
Hot-Dip Galvanized
Plain Oil Finish
Sendzimir Galvanized



Model: SZ-MF / A15HD /
A25HD
Thickness:
1.5 / 2.0 / 2.5 mm
Finish:
Pre-Galvanized,
Hot-Dip Galvanized



Model: KHAL 41 / KHA 41
Thickness:
1.5 / 2.5 mm
Finish:
Pre-Galvanized,
Hot-Dip Galvanized



Model: MS4125PG / MS4115PG
Thickness:
1.5 / 2.0 / 2.5 mm
Finish:
Pre-Galvanized,



Strut of
21 x 41 mm
(Nominal)



Model: Railstrut R421
Thickness:
2.0 / 2.5 mm
Finish:
Sendzimir Galvanized
Hot-Dip galvanized
Standard Finish



Model: R21SP
Thickness:
2.0 mm
Finish:
Hot-Dip Galvanized
Sendzimir Galvanized



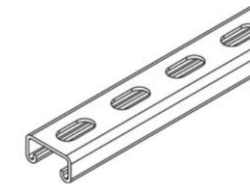
Model: Rail 21 x 41 LG
Thickness:
2.0 / 2.5 mm
Finish:
Pre-Galvanized,
Hot-Dip Galvanized



Model: Strut 21x41
Thickness:
2.5 mm
Finish:
Pre-Galvanized,
Hot-Dip Galvanized
Plain Oil Finish
Sendzimir Galvanized



Model: SZ-MG
Thickness:
1.5 / 2.0 / 2.5 mm
Finish:
Pre-Galvanized,
Hot-Dip Galvanized



Model: KHA 21
Thickness:
2.5 mm
Finish:
Pre-Galvanized,
Hot-Dip Galvanized



Model: MS2115 / MS2125PG
Thickness:
1.5 / 2.5 mm
Finish:
Pre-Galvanized,

©2019, RIDGID, Inc. The Emerson logo and RIDGID logo are registered trademarks of Emerson Electric Co. or RIDGID, Inc. in the U.S. and other countries. All other trademarks belong to their respective holders.



NEVER use with Stainless Steel Strut

1.4404 / RVS 304 / SS316L



StrutSlayr is capable of cutting many different brands throughout Europe - please refer to RIDGID technical help / customer service for support. WHEN IN DOUBT always CONTACT STRUT MANUFACTURER. Strut & StrutSlayr specifications are subject to changes without prior notice. ALWAYS PAY ATTENTION WHEN USING THE STRUTSLAYR.



Avoid serious injuries and damages to the Tool, read manual and safety instructions!
Do not force damaged or deformed strut into the StrutSlayr head and do not cut

RIDGID PRESSING | STRUTSLAYR COMPATIBILITY

RIDGID



Strut of
41 x 41 mm
(Nominal)

korA
HIGH PERFORMANCE FIXINGS



Model: KORA 41 X 41MM
Thickness: 2.5 mm
Finish: Pre-Galvanised
Zinc-plated $\geq 19\mu\text{m}$

MIDFIX
MX Channel System



Model: HS41, HP41, LS41
Thickness: 1.5 / 2.5 mm
Finish: Pre-Galvanised
Hot-Dip Galvanised



Model: TS41S-3, TS41P-3
Thickness: 2.5 mm
Finish: Pre-Galvanised

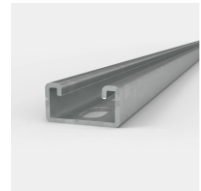
metpro
Group



Model: MPC1/3, MPC2/3
Thickness: 1.5 / 2.5 mm
Finish: Pre-Galvanised



Strut of
21 x 41 mm
(Nominal)



Model: KORA 41 X 21MM
Thickness: 2.5 mm
Finish: Pre-Galvanised
Zinc-plated $\geq 19\mu\text{m}$



Model: HS21, HP21, LS21
Thickness: 1.5 / 2.5 mm
Finish: Pre-Galvanised
Hot-Dip Galvanised



Model: TS21S-3, TS21P-3
Thickness: 2.5 mm
Finish: Pre-Galvanised



Model: MPC6/3, MPC7/3
Thickness: 1.5 / 2.5 mm
Finish: Pre-Galvanised

©2019, RIDGID, Inc. The Emerson logo and RIDGID logo are registered trademarks of Emerson Electric Co. or RIDGID, Inc. in the U.S. and other countries. All other trademarks belong to their respective holders.



NEVER use with Stainless Steel Strut

1.4404 / RVS 304 / SS316L



StrutSlayr is capable of cutting many different brands throughout Europe - please refer to RIDGID technical help / customer service for support. WHEN IN DOUBT always CONTACT STRUT MANUFACTURER. Strut & StrutSlayr specifications are subject to changes without prior notice. ALWAYS PAY ATTENTION WHEN USING THE STRUTSLAYR.



Avoid serious injuries and damages to the Tool, read manual and safety instructions!
Do not force damaged or deformed strut into the StrutSlayr head and do not cut



**DO NOT USE THIS GUIDE IN PLACE OF READING AND
UNDERSTANDING THE OPERATOR'S MANUAL.**

WARNING: ALWAYS UNDERSTAND AND FOLLOW THE INSTRUCTIONS
AND WARNINGS FOR ALL EQUIPMENT AND MATERIAL BEING USED TO
REDUCE THE RISK OF SERIOUS PERSONAL INJURY AND PRODUCT
DAMAGE.

MANUALS AND INSTRUCTIONS FOR RIDGID PRODUCTS ARE AVAILABLE
AT THE MANUFACTURER'S WEBSITE (RIDGID.COM) OR BY
CONTACTING CUSTOMER SERVICE.

REQUIRE **SUPPORT?**

RIDGID

WWW.RIDGID.COM