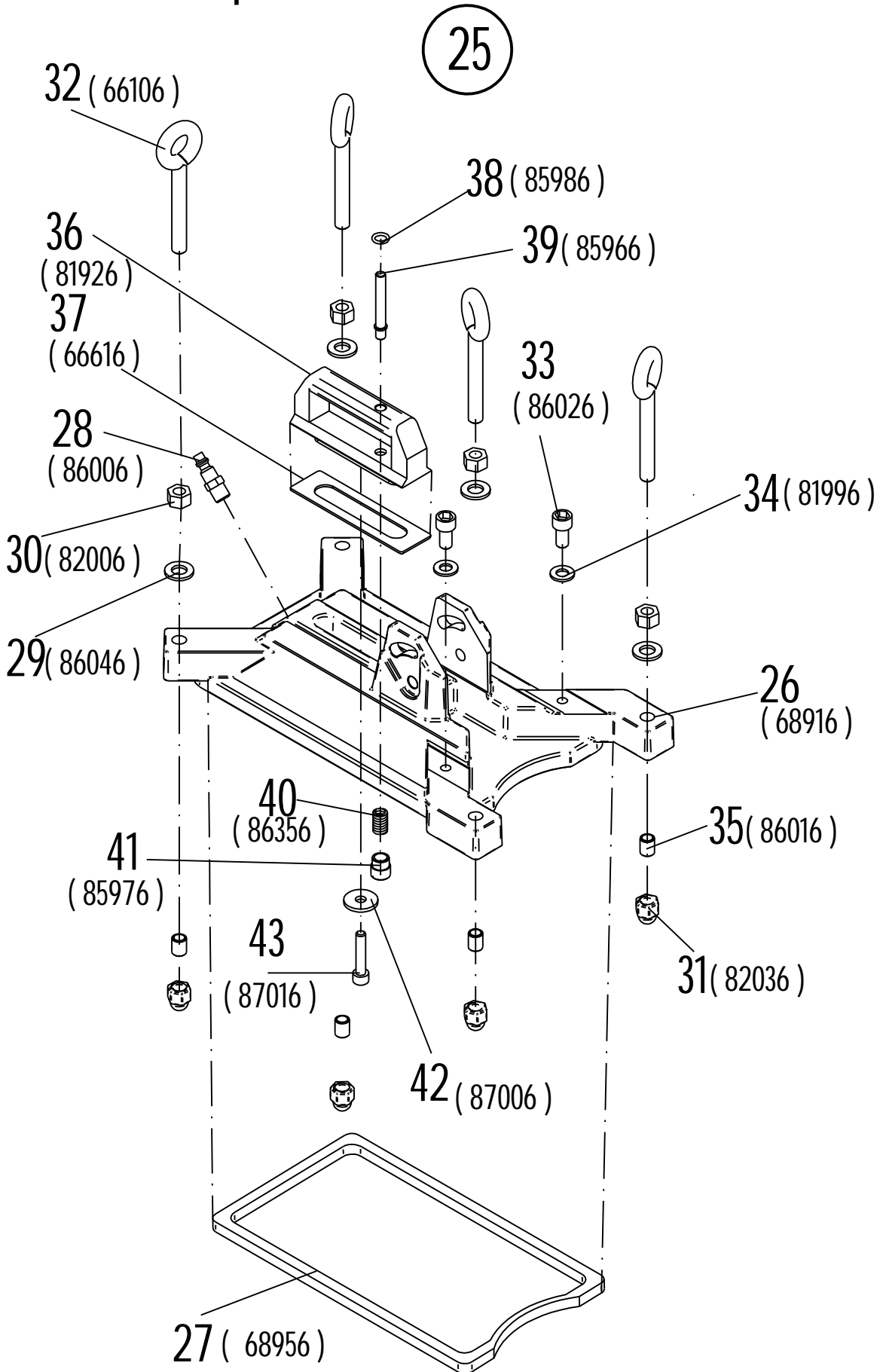


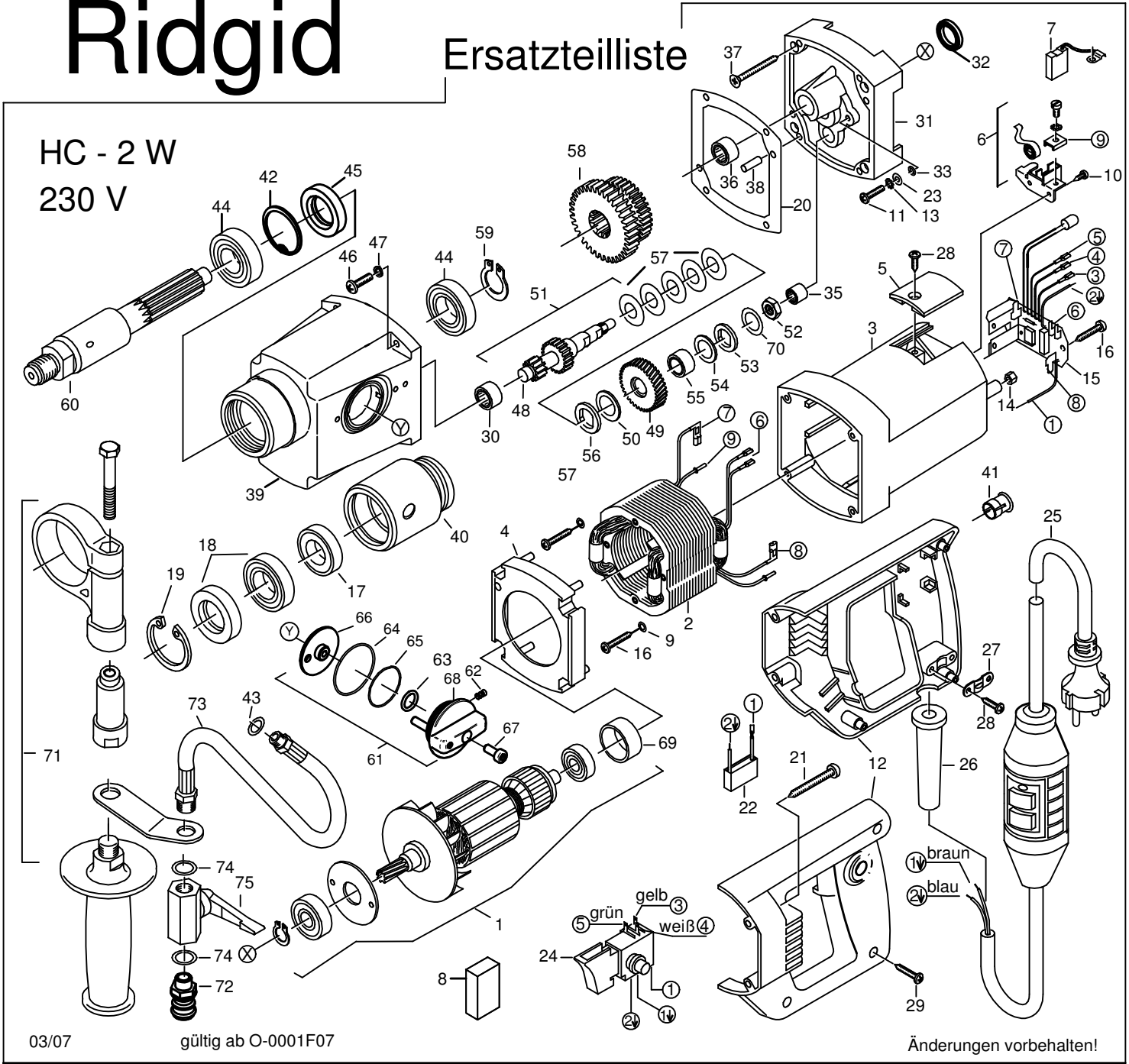
Base , complete 87266



Ridgid

Ersatzteilliste

HC - 2 W
230 V



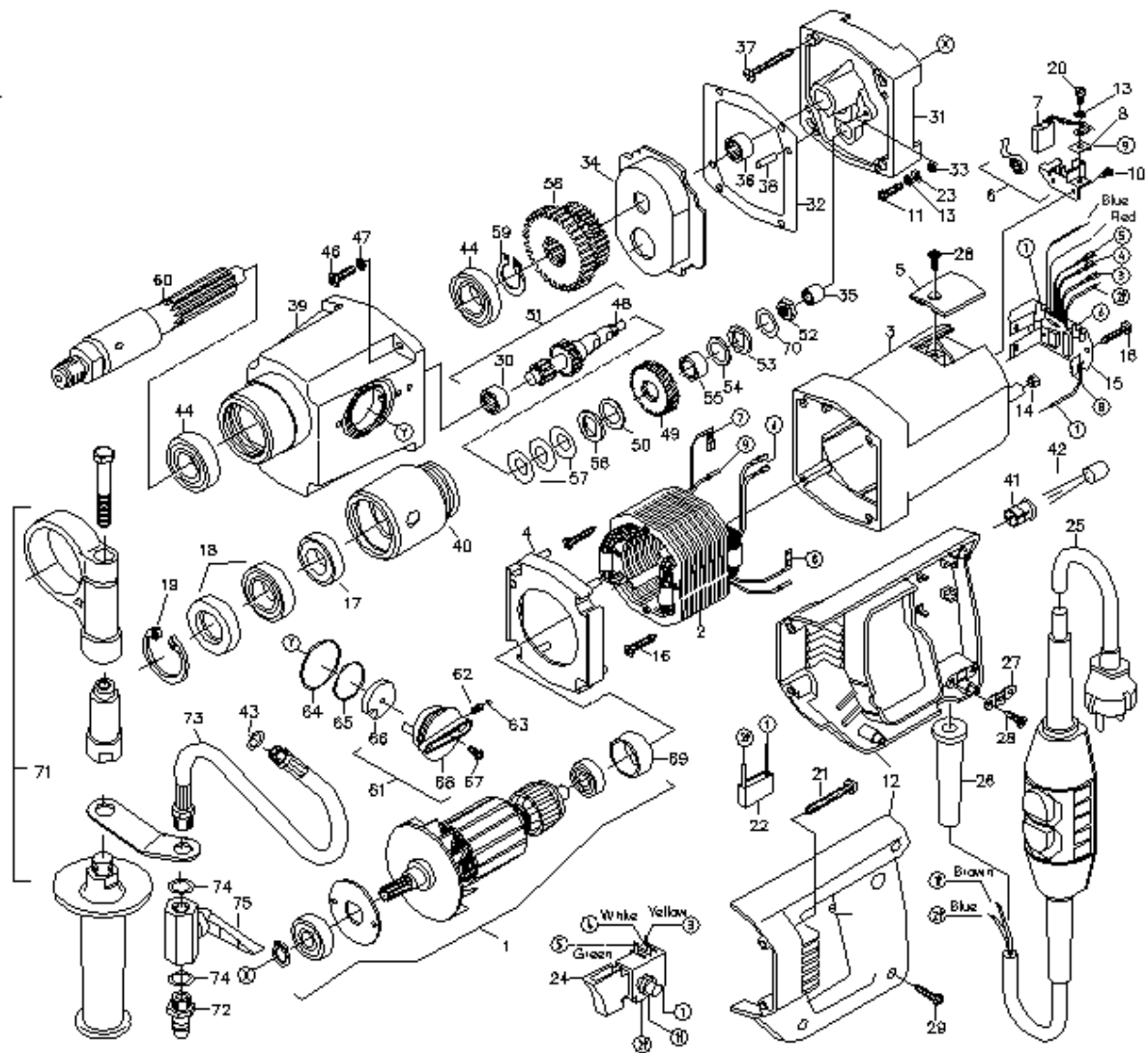
03/07

gültig ab O-0001F07

Änderungen vorbehalten!

Nr.	Desc	Cat. Nr.
1	oil - armature assy	31973
20	oil - packing gearcase	31978
31	oil - cover gearcase	31983
32	new part - shaft seal 15x	32013
39	oil - gearcase	31988
42	new part - snap ring	31963
45	new part - shaft seal 20x	31958
46	set -oil - screw oth head	31993
63	new part - rubber ring	31968
66	oil - mounting plate	31998
67	oil - screw m5x18	32003
68	oil - shifter knob	32008

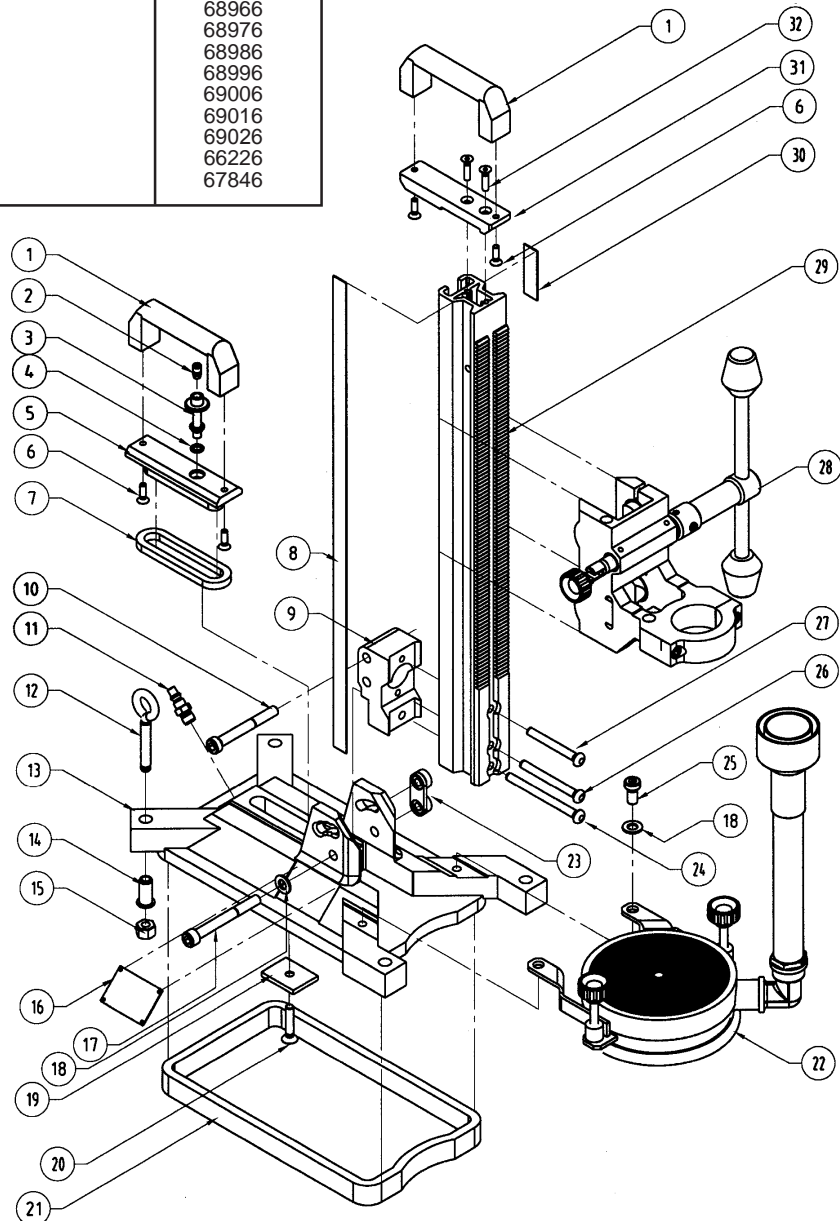
RIDGID[®] HC-2W



No.	Description	Cat. No.	No.	Description	Cat. No.	No.	Description	Cat. No.
1	ARMATURE ASSY	70526	28	SCREW 4,2X13	56116	55	BUSHING	55926
2	FIELD ASSY	55396	29	SCREW 4,2X22	56126	56	DRIVE PLATE	65216
3	MOTORHOUSING ASSY	55966	30	BUSHING 1012	70606	57	BELLEVILLE WASHER 28	65226
4	FANHOUSING	55386	31	COVER FOR GEARCASE	55506	58	IDLER GEAR	71776
5	BRUSHCAP	55976	32	PACKING F. GEARCASE	55516	59	CIRCLIP 19/1	55596
6	BRUSHHOLDER ASSY	65396	33	O-RING 3,68X1,78	56096	60	OUTPUTSPINDLE	70696
7	SET OF CARBON BRUSHES	64786	34	PARTITION FOR GREASE	70476	61	SHIFT KNOB ASSY	55476
8	AMP CONNECTOR PLATE	64796	35	BUSHING 0810	65006	62	COMPRESSION SPRING	56006
10	SCREW 2,9X13	56186	36	BUSHING 1210	56226	63	BALL	55676
11	SCREW M4X16	56286	37	SCREW 4,5X50	55696	64	O-RING 36X1,5	55686
12	HANDLE SET	70536	38	DOWEL PIN 5X16	65606	65	O-RING 28X1	55646
13	LOCKWASHER 4,3	64836	39	GEARCASE	70626	66	MOUNTING PLATE	70486
14	PLASTIC NUT M5	55936	40	WATER COLLECTOR	70636	67	SCREW M3X12	70496
15	CONNECTOR PLATE ASSY	70556	41	DIODE HOLDER	70646	68	SHIFTER KNOB	70506
16	SCREW 4,2X25	56136	42	DIODE	70656	69	BEARING SLEEVE	65346
17	SEAL 30X40X5	70566	43	SEAL 1/8	65086	70	BELLEVILLE WASHER 25	70516
18	SEAL 30X42X7	70576	44	BALL BEARING 6904	55806	71	AUXILIARY HANDLE ASSY	55526
19	CIRCLIPS 42/1,75	70586	46	SCREW M5X20	56296	72	CONNECTOR GARDENA	70716
20	SCREW M4X6	56266	47	LOCKWASHER 5	55716	73	HOSE ASSY	65286
21	SCREW 4,8X45	64876	48	INTERMEDIATE GEAR	71786	74	SEAL 1/4	65326
22	SUPPRESSOR	55416	49	CLUTCH-GEAR	70676	75	VALVE	65316
23	WASHER 4,3	56016	50	BRASS WASHER	65206			
24	SWITCH	55736	51	CLUTCH ASSY	70686			
25	LINE CORD W. GFI SWITCH	70596	52	HEX NUT M10X1	65196			
26	CABLE SLEEVE	55946	53	DRIVE PLATE	65186			
27	CABLE CLAMP	55906	54	BRASS WASHER	65176			

RIDGID[®] HC-2 STAND

HC-2 STAND (Cat # 59016)		
No.	Description	Cat. No.
1	Grip	66236
2	Spring	66386
3	Vacuum release valve	66196
4	O-ring	66656
5	Vacuum block	66206
6	Screw	68006
7	Rubber	66616
8	Sticker	66486
9	Block	68886
10	Cyl.Bolt	68896
11	Orientulle	66736
12	Eye Bolt	66106
13	Base	68916
14	Adjustment bushing	66186
15	Nut	67896
16	Type plate	68926
17	Cyl.Bolt	68936
18	Washer	67936
19	Securing plate	66626
20	Srew	67976
21	Rubber vacuum base	68956
23	Security plate	68966
24	Screw	68976
25	Cyl.Bolt	68986
26	Screw	68996
27	Screw	69006
28	Carriage Complete	69016
29	Column	69026
31	Grip Support	66226
32	Screw	67846

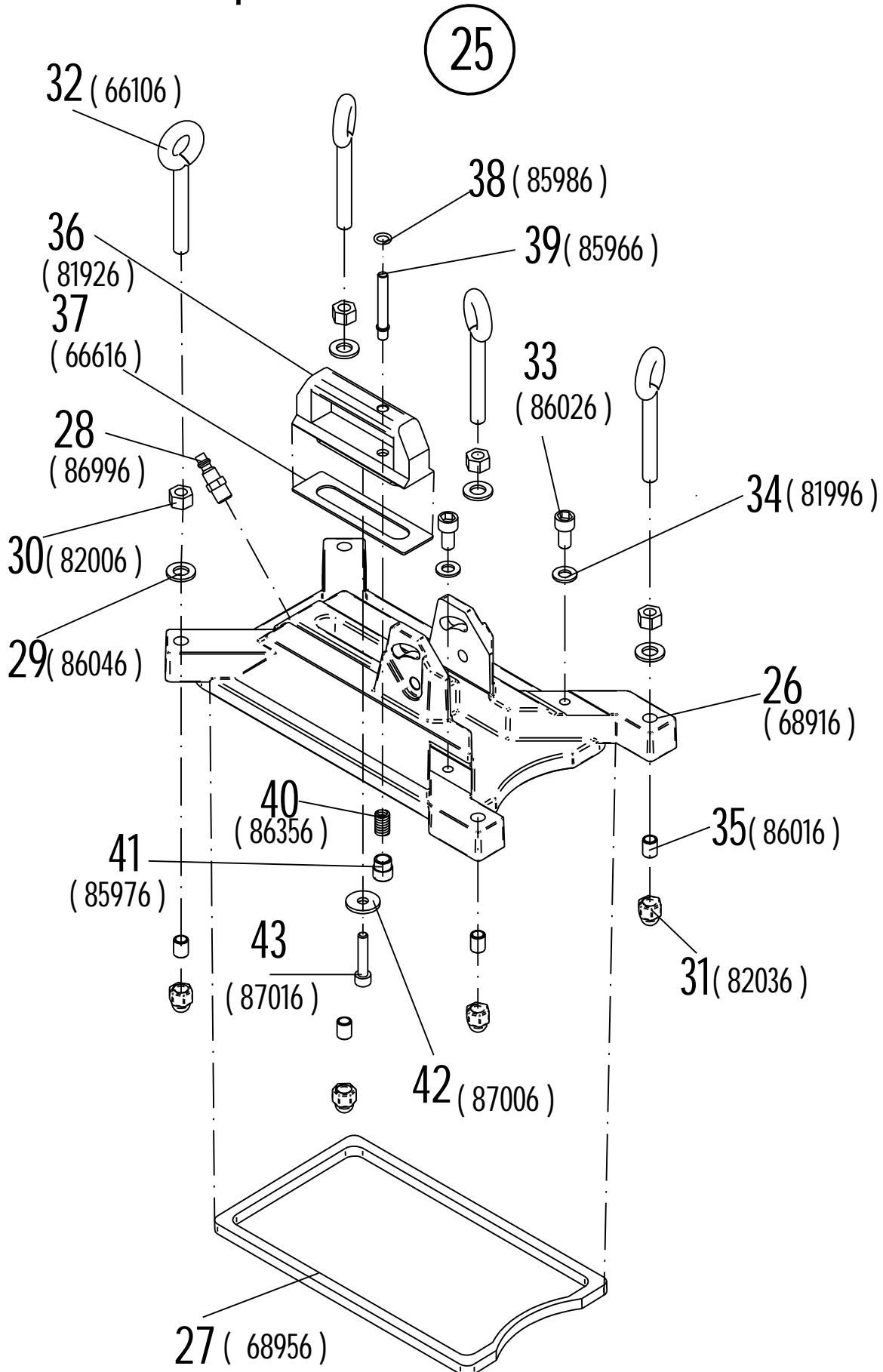


RIDGE TOOL COMPANY



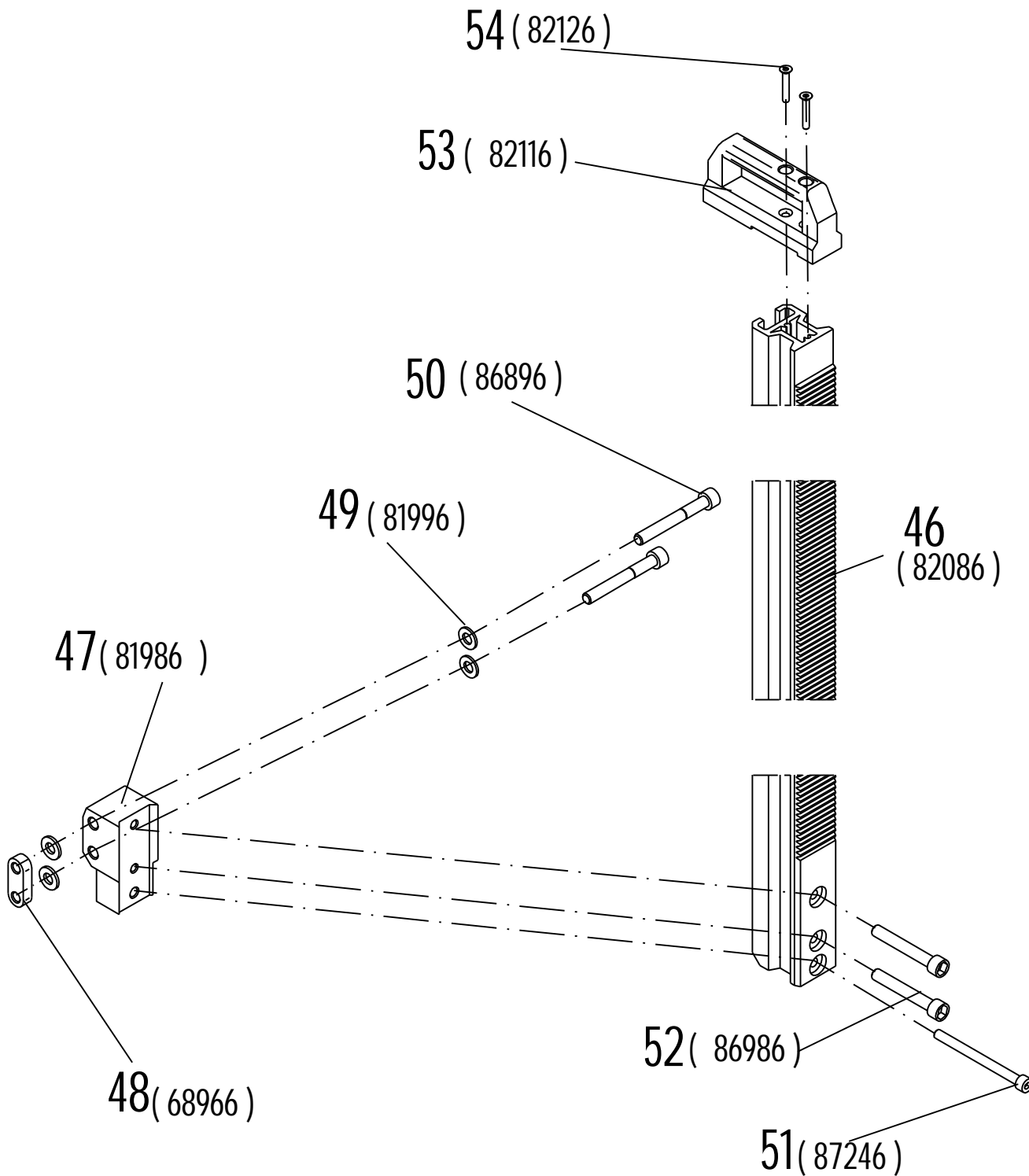
Clutch assemblies for HC2	Catno	Clutch Torque
HC2 Serial number > 000200 02/00	71836	12.5 - 16 Nm
HC2 Old version serial number < 000200 02/00	57516	12.5 - 16 Nm
HC2D	57516	12.5 - 16 Nm
HC2W	70686	12.5 - 16 Nm
Grease 1 kg HC-2	72666	

Base , complete 87266



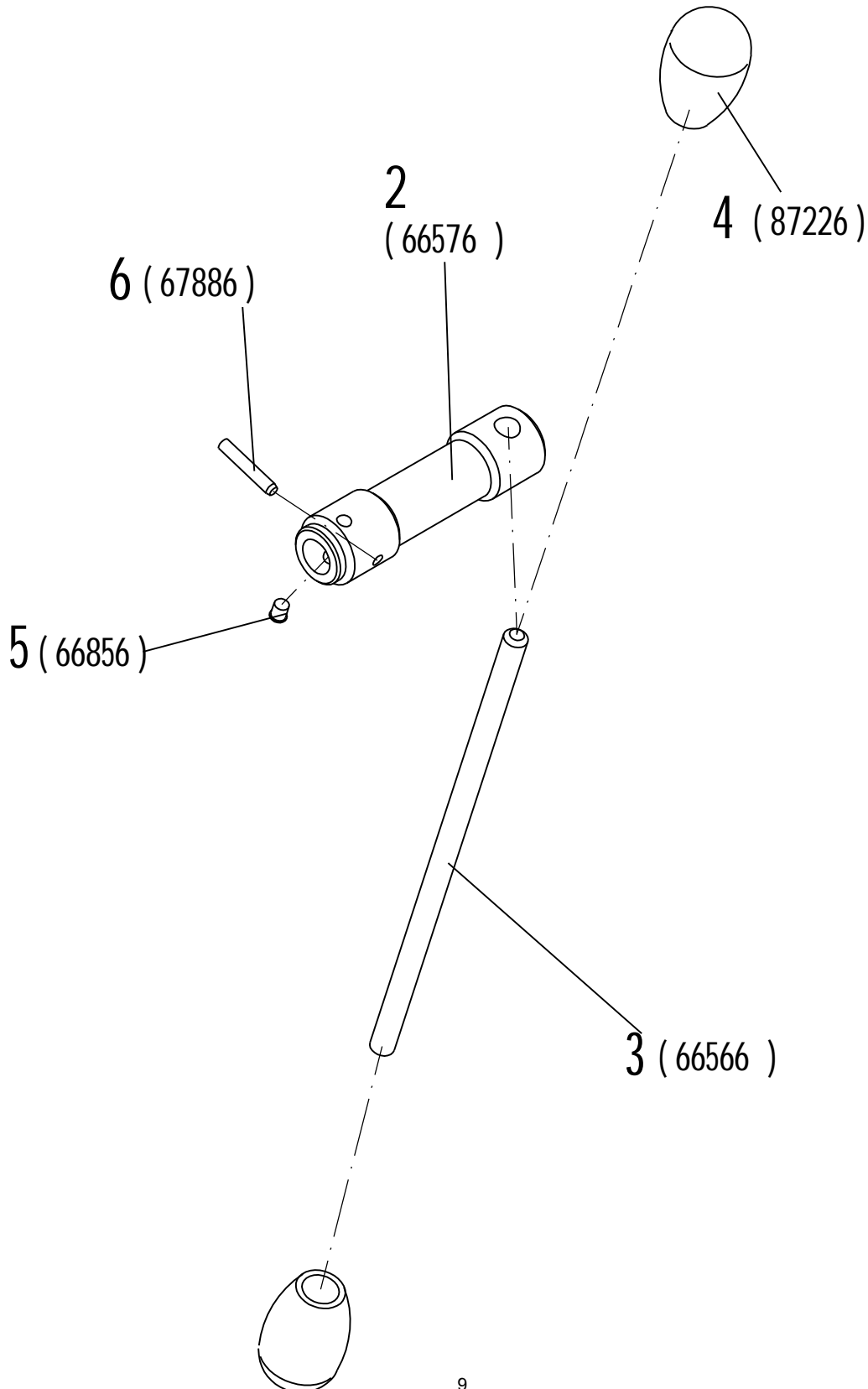
Column , complete 87026

45



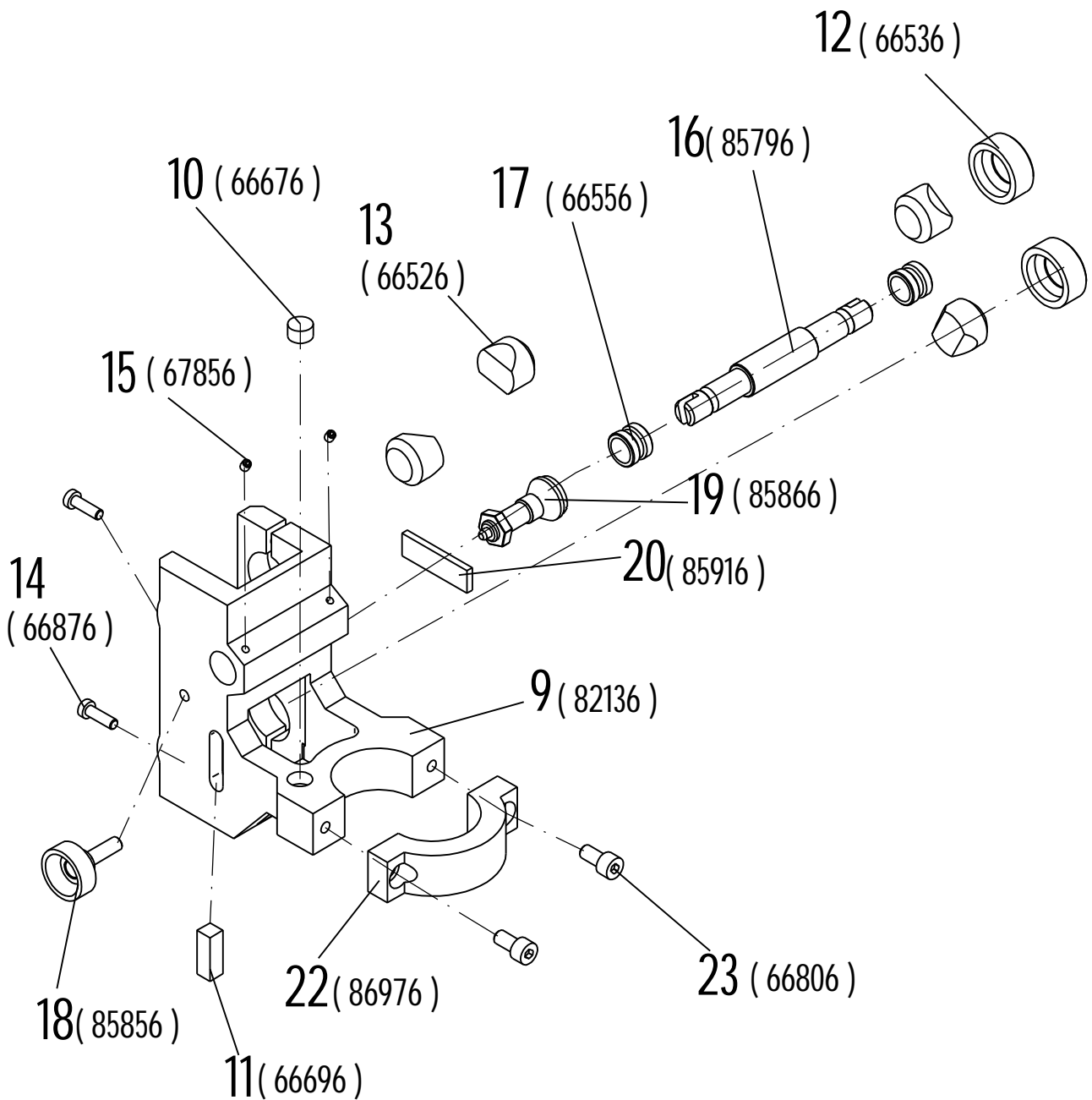
Spindle , complete 87046

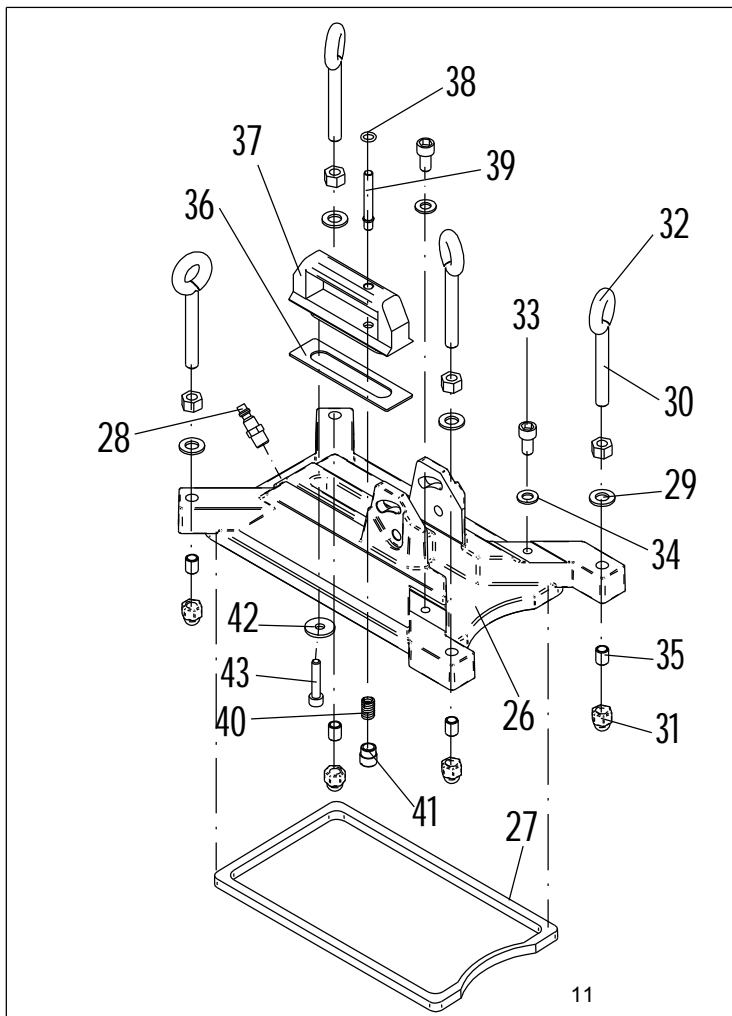
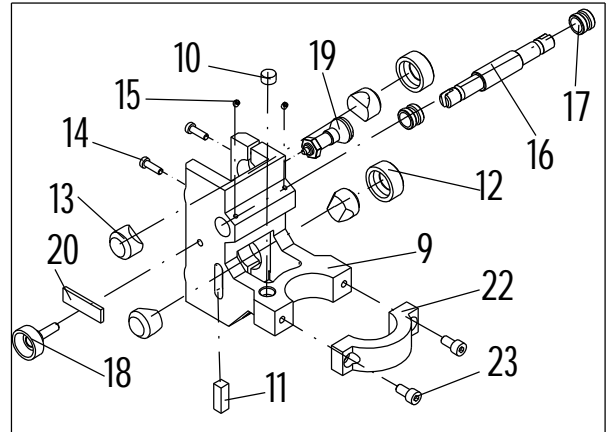
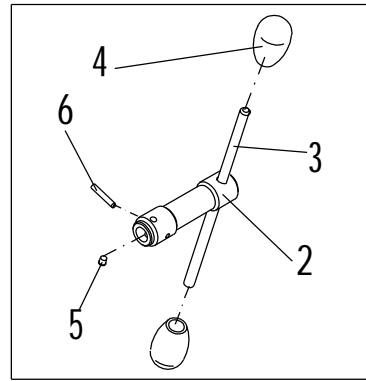
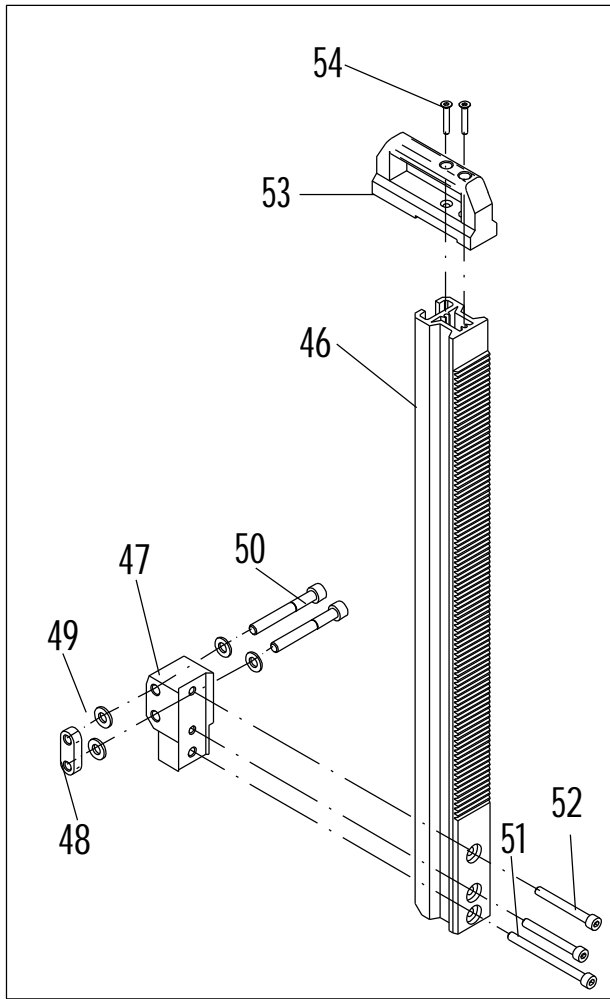
1



Carriage complete 86966

8





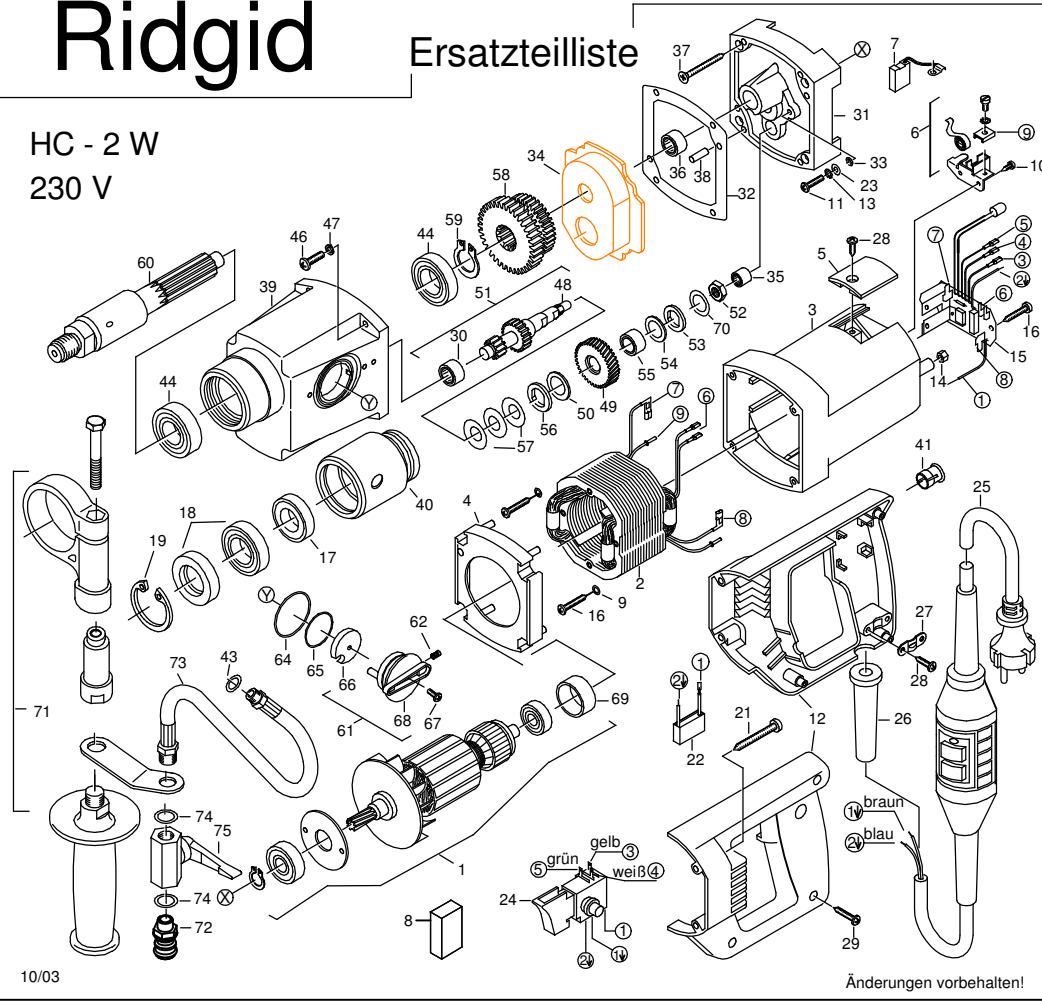
Grease

OIL

Ridgid

Ersatzteilliste

HC - 2 W
230 V



Ridgid

Ersatzteilliste

HC - 2 W
230 V

