

RE 60 ELECTRICAL TOOL

Introducing the World's Most Versatile Electrical Tool, Featuring the Innovative 3-in-1 RIDGID® QuickChange System™



Benefits

- Cut wire, crimp lugs and punch boxes with just one tool via the unique RIDGID QuickChange System™
- Eliminates trips back and forth to the truck searching for different tools
- 3-in-1 tool saves valuable cargo space and comes in a single, easy-to-carry case
- In-line design for easy, one-'handed operation'
- 360° head rotation increases maneuverability
- Industry-leading service interval maximizes uptime on the job site

Specifications

- 6-ton (60 kN) hydraulic force output to cut armored cable up to 50 mm O.D., crimp Cu/Alu lugs up to 300 mm² and punch round holes up to 63,5 mm
- Automatic ram retraction when cutting and crimping
- Rubber overmolded grips for superior comfort and control
- Bright white LED workspace illumination light
- On/Off button for disabling tool when changing heads or transporting
- Nylon straps for greater tool security
- Approximate Cycle Time: 5 seconds
- Service Interval: 32,000 cycles
- Weight: 3.2 kgs w/battery
- Kit Includes: RE 60 Electrical Tool, 2× 18 V Advanced Lithium 2.0 A batteries, 230 V Charger and blow-molded case; multiple head configurations available

Ordering Information

Catalog N°	Description	Weight kg
43633	RE 60 Electrical Tool Kit w/SC-60B Scissor Cutter, LR-60B Latching Round Crimp Head and PH-60B Punch Head	13,5
43628	RE 60 Electrical Tool Kit w/SC-60B Scissor Cutter Head and LR-60B Latching Round Crimp Head	11,7
43613	RE 60 Electrical Tool Kit w/LR-60B Latching Round Crimp Head	10
43618	RE 60 Electrical Tool Kit w/SC-60B Scissor Cutter Head	10
43623	RE 60 Electrical Tool Kit w/PH-60B Punch Head	9,5
47773	RE 60 Electrical Tool Case Only	4,3
47753	LR-60B Latching Round Crimp Head Only	1,5
47758	LS-60B Latching Square Crimp Head Only	1,5
47763	PH-60B Knockout Punch Head Only	1,6
47778	SC-60B Scissor Cutter Head w/Blade for Cu/Alu Cable	2,2
47088	Interchangeable Blade for Copper/Aluminum Cable	0,1
47093	Interchangeable Blade for Copper Fine Stranded Wire	0,1
43323	18 V Advanced Lithium 2.0 A Battery	0,5
43328	18 V Advanced Lithium 4.0 A Battery	0,7
43333	230 V Advanced Lithium Battery Charger	0,8



Featuring the RIDGID QuickChange System™



ELECTRICAL TOOLS

LR-60B & LS-60B

LATCHING ROUND & SQUARE CRIMP HEAD



LR-60B
Cat. N°: 47753

LS-60B
Cat. N°: 47758

Benefits

- Crimp lugs up to 300 mm² cable w/ LR-60B (up to 185 mm² w/LS-60B)
- Slim, ergonomic latching system allows tool to access tighter spaces
- 360° head rotation increases maneuverability
- Combine with other heads in the RIDGID® QuickChange System™ to maximize efficiency and productivity on the job site
- LR-60B and LS-60B hold respectively round and square shape dies within the capacity range

Specifications

- Crimp up to 300 mm² (round crimp head) and 185 mm² (square crimp head) copper and aluminium lugs
- Interchangeable crimp heads are compatible with RE 60 Electrical Tool featuring the QuickChange System™
- Approximate Cycle Time: 5 seconds
- Weight Crimping Heads: 1,5 kg
- Offering: LR-60B Latching Round Head available in a RE 60 Tool Kit and can also be purchased separately. LS-60B Latching Square Head only available as standalone

Crimping Dies for LR-60B and LS-60B Crimp Heads



Round Crimping Dies for crimping DIN 46235 copper lugs and DIN 46267-1 connectors



Round Crimping Dies for crimping standard type copper tubular lugs and connectors



Round Crimping Dies for crimping DIN type aluminium lugs and connectors



Square Crimping Dies for crimping DIN type aluminium lugs and connectors

Catalog N°	Cross Section mm ²
44173	6
44178	10
44183	16
44188	25
44193	35
44198	50
44203	70
44208	95
44213	120
44218	150
44223	185
44228	240
44233	300

Round Dies fit on LR-60B Latching Round Crimp Head

Catalog N°	Cross Section mm ²
47933	6
47938	10
47943	16
47948	25
47953	35
47958	50
47963	70
47968	95
47973	120
47978	150
47983	185
47988	240
47993	300

Round Crimp Dies fit on LR-60B Latching Round Crimp Head

Catalog N°	Cross Section mm ²
44243	16-25
44248	35
44253	50
44258	70
44263	95-120
44268	150
44273	185
44278	240

Round Crimp Dies fit on LR-60B Latching Round Crimp Head

Catalog N°	Cross Section mm ²
44288	16-25
44293	35
44298	50
44303	70
44308	95-120
44313	150
44318	185

Square Crimp Dies fit on LS-60B Latching Square Crimp Head

PH-60B HOLE PUNCHING HEAD


PH-60B

Cat. N°: 47763

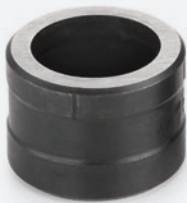
Benefits

- Effortlessly punch up to 63,5 mm holes in 3 mm mild steel without burdensome ratcheting or pumping
- 360° head rotation enables maneuverability in tight spaces
- Combine with other heads in the RIDGID QuickChange System™ to maximize efficiency and productivity on the job site
- RIDGID Hole Punch Dies for quick and clean round hole punching without material jamming

Specifications

- Capacity: Punches up to 63,5 mm round holes, 92 × 92 mm square holes, 46 × 92 mm rectangular holes in max. 3 mm mild steel
- Compatible with punch dies from RIDGID® and other manufacturers (sold separately)
- Interchangeable head is compatible with RE 60 Electrical Tool Kit featuring the RIDGID QuickChange System™
- Approximate Cycle Time: 5 seconds
- Weight: 1,60 kg
- Includes: PH-60B Punch Head and instruction sheet; available as standalone head or in a RE 60 Electrical Tool Kit

Hole Punching Dies & Accessories


**Standalone
Hole Punch & Die**
Hole Punch Set
**Hole Punching
Accessories**

Catalog N°	Hole Punches for Punching Round Holes through max. 3 mm mild steel plates
44058	Hole Punch ST16 (16,2 mm)
44063	Hole Punch ST20/PG13 (20,4 mm)
44068	Hole Punch ST25 (25,4 mm)
44073	Hole Punch ST32 (32,5 mm)
44078	Hole Punch ST40 (40,5 mm)
44083	Hole Punch ST50 (50,5 mm)
44088	Hole Punch ST63 (63,5 mm)
44093	Hole Punch PG16 (22,5 mm)

Catalog N°	Hole Punch-Set featuring ST16/20/25/32/40 Hole Punches and Dies, 3 Spacers, 2 Draw Bolts
44113	Hole Punch-set

Catalog N°	Accessories
44098	9,5 mm Draw Bolt required for ST16/20/PG13/ST25 punches
44103	19 mm Draw Bolt required for ST32/40/50/63 punches
44108	Set of Spacers required for all Hole Punch sizes

- Hole Punches up to 25,4 mm require the use of 9,5 mm draw bolt (44098) and 1x Spacer No. 4 included in the Set of Spacers (44108)
- Hole Punches larger than 25,4 mm require the use of 19 mm draw bolt (44103) and Spacer No. 1 and 2 included in the Set of Spacers (44108).



SC-60B

SCISSOR CUTTER HEAD



SC-60B

Cat. N°: 47778

Benefits

- Interchangeable blades adapt single head and tool to cut different types of cable
- 360° head rotation enables maneuverability in tight spaces
- Combine with other heads in the RIDGID QuickChange System™ to maximize efficiency and productivity on the job site

Specifications

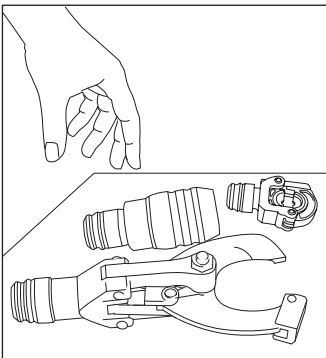
- Capacity and Material: Interchangeable blades available for 50 mm O.D. armored copper and aluminium building wire, 50 mm O.D. armored fine stranded copper wire
- Interchangeable head is compatible with 60 kN RIDGID Electrical Tools featuring the RIDGID QuickChange System™
- Made from a high-strength steel alloy to increase durability and lifespan of scissor cutter blades and interchangeable head
- Approximate Cycle Time: 5 seconds
- Weight: 2,2 kg
- Offering: SC-60B Scissor Cutter Head with blades for armored copper and aluminium building wire and instruction sheet; available as stand-alone head or in a RE-60 Electrical Tool Kit
- Optional: blades for Fine Stranded Copper Wire

Interchangeable Blade Sets

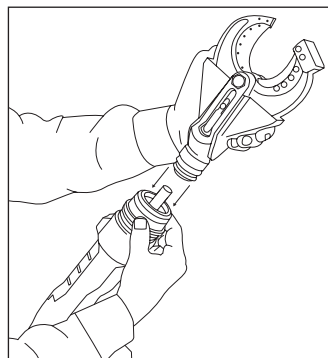


Catalog N°	Description
47088	Interchangeable Blade Set for Copper/Aluminum Cable
47093	Interchangeable Blade Set for Copper Fine Stranded Wire

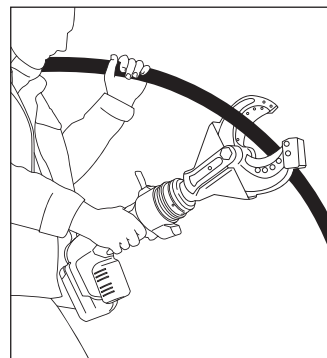
How the RIDGID® QuickChange System™ Works



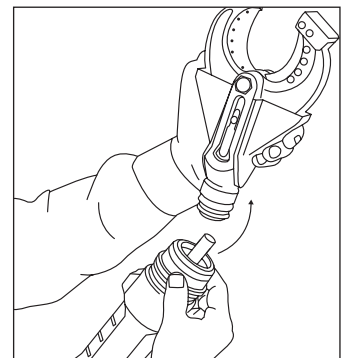
1. Select the appropriate interchangeable head for the job.



2. Insert the head until you hear a click confirming the connection.



3. Complete the job—cut, crimp or punch.



4. Remove the head by pulling a movable collar toward the base of the tool.

RIDGID®

Ridge Tool UK
c/o Emerson Electric UK Ltd, 2nd Floor Accurist House
44 Baker Street, London, W1U 7AL

T: +44 (0) 808 238 9869 UK
T: +353 1 800 936 397 Ireland
ridgid.gb@emerson.com

F: +44 (0) 808 238 9904 UK
F: +353 1 800 936 240 Ireland
www.RIDGID.eu

EMERSON
Commercial & Residential Solutions