

RIDGID®

RE 12-M Manual Hydraulic Crimp Tool



Introducing the world's *lightest* and *easiest-to-use* 12-Ton Manual Hydraulic Crimp Tool featuring the patent-pending RIDGID® RapidAdvance System™

- Lightest 12-Ton Tool on the market*, for more portability and ease of use
- Unique RIDGID® RapidAdvance System™ that quickly engages even the smallest connectors in just two pumps
- Low handle force reduces hand strain and operator fatigue
- Industry-exclusive head stand allows for one-person, one-handed operation.
- 13 slots for crimping dies in the carrying case with special die slot decals for quick die identification and retrieval

* Among commonly used C-Frame Style Manual Hydraulic Crimp Tools



SPECIFICATIONS

- 12-Ton hydraulic force output and 1.65" jaw opening accommodates lugs and connectors up to 1000 kcmil Cu
- RIDGID® RapidAdvance System™ quickly engages connectors in just 2 pumps to minimize pumping
- Pressure relieve valve signals when the maximum force is reached and crimping is complete
- Manual ram retraction
- 330° head rotation to access tight spaces
- Rubber grips for superior comfort and control
- Length: 22", Weight: 11.8 lbs
- Capacity: Max. 1000 kcmil Cu/750 kcmil Al
- Kit includes: RE 12-M Tool, Head Stand, RIDGID Die Slots Decals, Blow Molded Case, Operator's Manual
- Classified to UL 1976 with connectors and wire that comply with the requirements of UL 486A-486B

ORDER INFORMATION

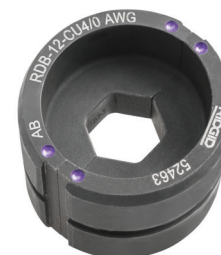
CATALOG NO.	DESCRIPTION	WEIGHT	
		(lb.)	(kg)
48373	RE 12-M Crimp Tool Kit	25.0	11.3
48983	RE 12-M Crimp Tool Only (no case)	11.8	5.3
48973	RE 12-M Case	9.7	4.4
48988	RE 12-M Head Stand	0.5	0.2



Crimping Dies

Cat. No.	Description
52583	12T Copper Round Die Set
<i>Individual Dies that come in the set, listed below</i>	
52423	12T Copper #8 AWG Round Die
52428	12T Copper #6 AWG Round Die
52433	12T Copper #4 AWG Round Die
52438	12T Copper #2 AWG Round Die
52443	12T Copper #1 AWG Round Die
52448	12T Copper 1/0 AWG Round Die
52453	12T Copper 2/0 AWG Round Die
52458	12T Copper 3/0 AWG Round Die
52463	12T Copper 4/0 AWG Round Die
52468	12T Copper 250 kcmil Round Die
52473	12T Copper 300 kcmil Round Die
52478	12T Copper 350 kcmil Round Die
52483	12T Copper 400 kcmil Round Die
52488	12T Copper 500 kcmil Round Die
52493	12T Copper 600 kcmil Round Die
52498	12T Copper 750 kcmil Round Die

Cat. No.	Description
52588	12T Aluminum Round Die Set
<i>Individual Dies that come in the set, listed below</i>	
52503	12T Aluminum #8 AWG Round Die
52508	12T Aluminum #6 AWG Round Die
52513	12T Aluminum #4 AWG Round Die
52518	12T Aluminum #2 AWG Round Die
52523	12T Aluminum #1 AWG Round Die
52528	12T Aluminum 1/0 AWG Round Die
52533	12T Aluminum 2/0 AWG Round Die
52538	12T Aluminum 3/0 AWG Round Die
52543	12T Aluminum 4/0 AWG Round Die
52548	12T Aluminum 250 kcmil Round Die
52553	12T Aluminum 300 kcmil Round Die
52558	12T Aluminum 350 kcmil Round Die
52563	12T Aluminum 400 kcmil Round Die
52568	12T Aluminum 500 kcmil Round Die
52573	12T Aluminum 600 kcmil Round Die
52578	12T Aluminum 750 kcmil Round Die



- Dies clearly marked with color codes to easily match with proper lug
- Hex crimp profile

Other Products Available



RE 6 Electrical Tool Kit

Cat. No.	Description
52093	RE 6 Cut, Crimp, & Punch Kit

Cat. No.	Description
52098	RE 6 Cut & Crimp Kit
52113	RE 6 Cut & Punch Kit
52118	RE 6 Crimp & Punch Kit

999-997-427.10