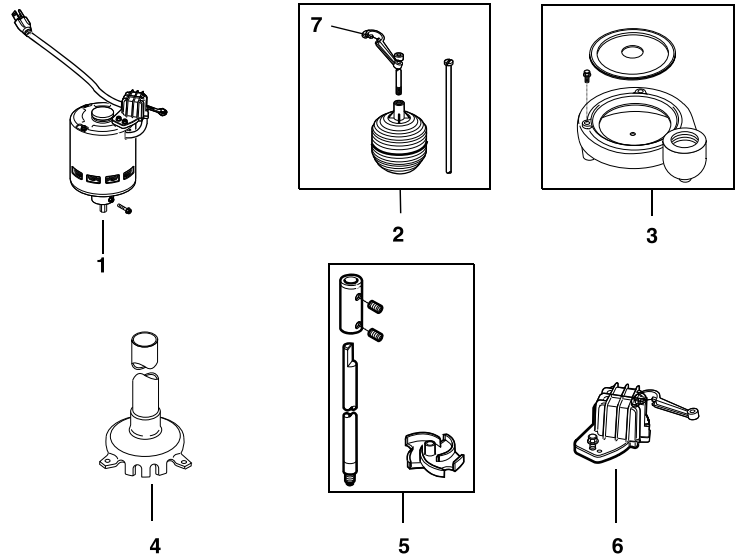


# SP-330P/SP-500P

## Pedestal Sump Pump

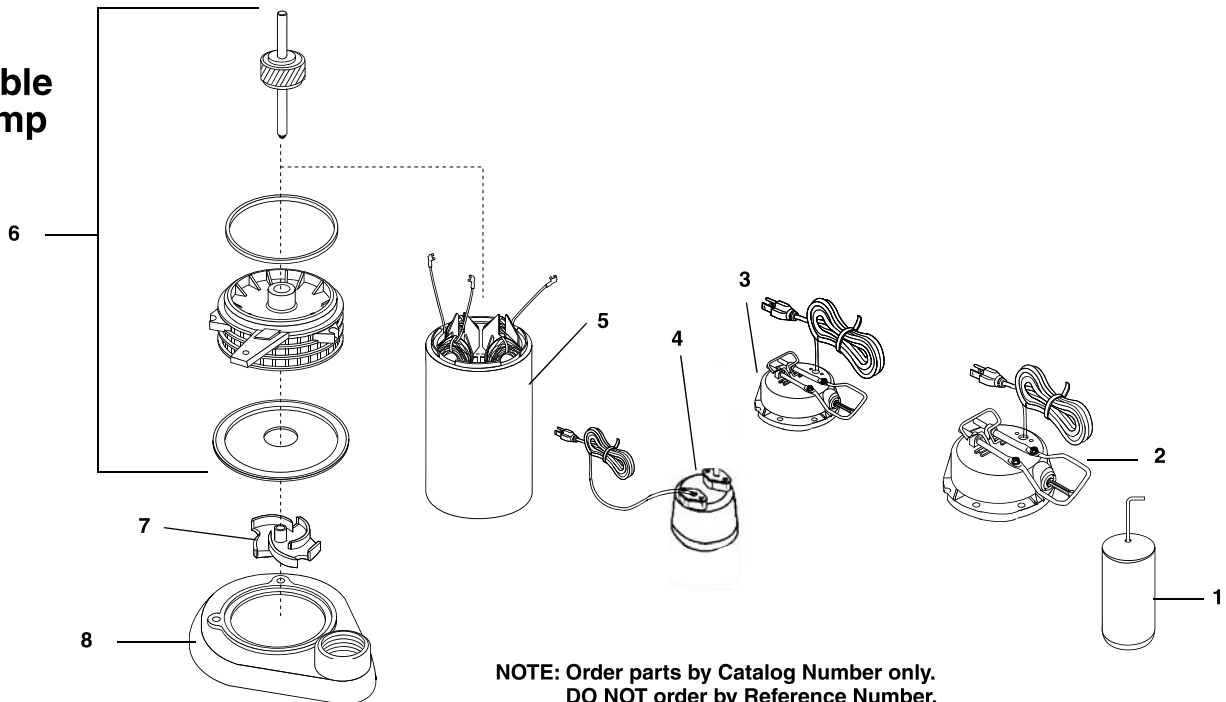
NOTE: Order parts by Catalog Number only.  
DO NOT order by Reference Number.

|          | SP330P      | SP500P      |  |
|----------|-------------|-------------|--|
| Ref. No. | Catalog No. | Catalog No. | Description                              |
| 1        | 22813       | 88462       | Motor Kit                                |
| 2        | 88467       | 88467       | Float and Guide Kit                      |
| 3        | 22823       | 88472       | Volute Kit                               |
| 4        | —           | 88477       | Pump Top Housing with Bearing and Column |
| 5        | 22828       | 88482       | Impeller Kit                             |
| 6        | 88487       | 88487       | Switch Kit                               |
| 7        | 22808       | 22808       | Float Rod Guide                          |



# SP-330 SP-330D SP-500 SSP-1000

## Submersible Sump Pump



NOTE: Order parts by Catalog Number only.  
DO NOT order by Reference Number.

|          | SP330       | SP330D      | SP500       | SSP-1000    |                     |
|----------|-------------|-------------|-------------|-------------|---------------------|
| Ref. No. | Catalog No. | Catalog No. | Catalog No. | Catalog No. | Description         |
| 1        | 88557       | N/A         | 88557       | N/A         | Float Kit           |
| 2        | N/A         | N/A         | 88562       | 25143       | Switch/Top Assembly |
| 3        | N/A         | 22798       | N/A         | N/A         | Top Cover           |
| 4        | N/A         | 22803       | N/A         | N/A         | Diaphragm           |
| 5        | 88577       | 88577       | 88582       | 25148       | Stator              |
| 6        | 88587       | 88587       | 88592       | 25153       | Lower Bracket/Rotor |
| 7        | 88597       | 88597       | 88597       | 25158       | Cast Iron Impeller  |
| 8        | 88602       | 90382       | 88602       | 88602       | Cast Iron Volute    |