

ELECTRICAL BROCHURE

PRODUCT CATALOG

RIDGID



1

CUT
WIRE

2

CRIMP
LUGS

3

PUNCH
BOXES



RE 60

Electrical Tool

3 Functions. 1 Tool. Multiple benefits. page 3
 How it Works page 4-5
 Interchangeable Heads • Accessories page 6-7



RE 600 ELECTRICAL TOOLS page 8



HYDRAULIC CRIMPING TOOLS page 9-10



STORAGE BOX SYSTEM page 11



CORE DRILLING page 12



MANUAL CABLE CUTTERS page 13



UTILITY LOCATING page 14-16



TEST & MEASUREMENT page 17-18



HANDHELD INSPECTION CAMERAS page 19



CUTTERS AND TRIMMERS page 20



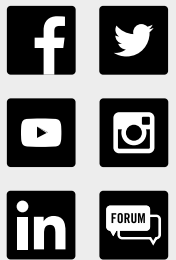
WRENCHES • HAND TOOLS page 21



CONDUIT BENDERS • HAND THREADERS page 22

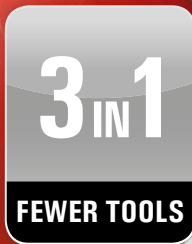
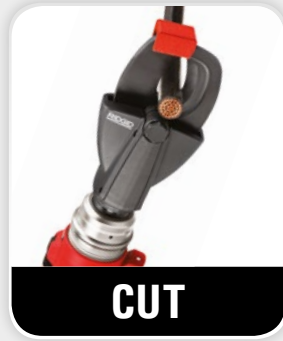


KNOCKOUT KITS • HOLE SAWS page 23



RE 60

3 FUNCTIONS.
1 TOOL.
MULTIPLE BENEFITS.

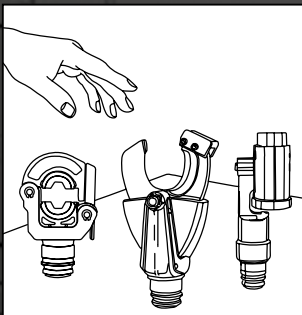


Introducing the **world's most versatile electrical tool**. The RE 60 from RIDGID® features our unique QuickChange System™, allowing you to quickly and easily switch between interchangeable heads for cutting, crimping and punching. Now your most critical tasks can be accomplished with one innovative tool. No more back and forth to the truck, searching for different tools. Whether you're cutting wire, crimping lugs or punching boxes, the RE 60 helps you maximize your productivity and efficiency on the jobsite. **Experience it at RIDGID.EU/QCS.**

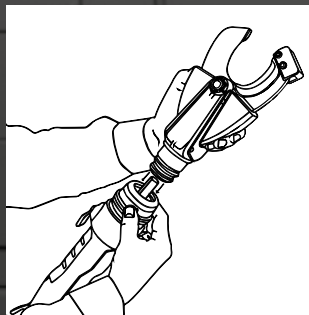
THE RIDGID® QUICKCHANGE SYSTEM™



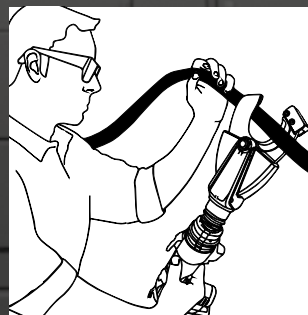
HOW IT WORKS:



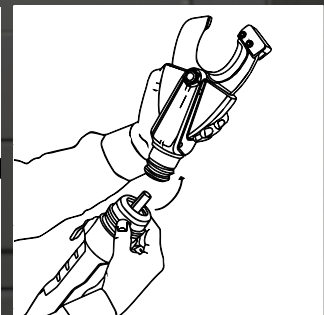
1. Select the appropriate interchangeable head for the job.



2. Pull back on QCS™ collar and insert the head; release the collar until it clicks into place.



3. Complete the job — cut, crimp or punch.



4. Remove the head by pulling the QCS™ collar toward the base of the tool.



RE 60 ELECTRICAL TOOL

The world's most versatile tool features a lightweight inline design (only 3,2 kg with battery) for easy, one-handed use and access to the most confined spaces.

KEY PERFORMANCE FEATURE

QUICKCHANGE SYSTEM™

RE 60's unique QuickChange System™ allows the user to - crimp lugs up to 300 mm², cut cables up to 50 mm dia. and punch holes up to 100 mm dia. – ALL with a single tool.

SPECIFICATIONS

- 60 kN hydraulic force output to cut cable up to 50 mm Diameter, crimp Cu/Al lugs up to 300 mm² and punch round holes up to 100 mm;
- Automatic ram retraction when cutting and crimping;
- Rubber overmolded grips for superior comfort and control;
- 360° head rotation;
- Advanced Diagnostics with built-in sensors and LED indicators, for ensuring the best tool performance in extreme job-site conditions;
- Bright white LED-light for workspace illumination;
- On/Off button for disabling tool when changing heads or transporting;
- Nylon straps for greater ease-of-use;
- Approximate Cycle Time: 5 seconds;
- Longest service interval in the industry: 32.000 cycles;
- Weight: 3.2 kg w/battery;
- Temperature range: -10°C - 50°C;
- RE 60 Kits include: RE 60 Electrical Tool, 2 × 18 V 2.0 Ah Advanced Lithium batteries, Battery Charger and Blow-molded Case; multiple head configurations available.

ORDERING INFO

ORDERING INFORMATION (RE 60 KITS*)

Catalog N°	Description	No of Heads	CRIMP LR-60B	CRIMP (Dieless) 4P-6	CUT SC-60C	PUNCH PH-60C
43633	RE 60 Crimp, Cut & Punch Kit	3	•		•	•
55338	RE 60 Dieless Crimp, Cut & Punch Kit			•	•	•
43628	RE 60 Crimp & Cut Kit	2	•		•	
55333	RE 60 Dieless Crimp & Cut Kit			•	•	
50108	RE 60 Crimp & Punch Kit		•			•
43613	RE 60 Crimp Kit	1	•			
55328	RE 60 Dieless Crimp Kit			•		
43618	RE 60 Cut Kit				•	
43623	RE 60 Punch Kit					•

* All Kits Include: RE 60 Electrical Tool, 2x 18 V Advanced Lithium Batteries, Battery Charger and Blow-molded Case.

ACCESSORIES

Cat. N°	Description	Weight kg
52138	RE 60 Electrical Tool Case Only	5,1
47753	LR-60B Latching Round Crimp Head Only	1,5
52078	PH-60C Swiv-L-Punch Head Only	2,1
47918	SC-60C Cutter Head Only with Copper/Aluminum Wire Blades	2,1
52283	4P-6 4PIN™ Dieless Crimp Head Only	2,6
47923	Interchangeable Blades for Copper/Aluminum Cable	0,1
49408	SC-60C Cutter Head Only with ACSR Blades	2,1
47928	Interchangeable Blades for ACSR Cable	0,1
43323	18 V Advanced Lithium 2.0 Ah Battery	0,5
43328	18 V Advanced Lithium 4.0 Ah Battery	0,7
43333	230 V Advanced Lithium Battery Charger	0,8

INTERCHANGEABLE HEADS

SCISSOR CUTTER HEAD

Made from high-strength steel, this Cutter Head uses interchangeable blades capable of cutting copper & aluminium building wire and fine stranded copper wire. The SC-60C comes standard with a blade set for copper and aluminium building wire.

NAME:	SC-60C	SC-60C ACSR
CAT. N°:	47918	49408
WEIGHT:	2,1 kg	2,1 kg

CAPACITY & MATERIAL:

Copper and Aluminium Building Wire and Fine Stranded Copper Wire (default)

Up to 50 mm diameter

Cat. N° Replacement Blade:
47923

ACSR
Cable

Up to 30 mm diameter

Cat. N° Replacement Blade:
47928



HOLE PUNCHING HEAD

Designed for use with RIDGID® and other commercially available punch dies, the Punch Head is ideal for punching round, square and rectangular holes in ST37 steel plates up to 3 mm wall-thickness.

NAME:	PH-60C Swiv-L-Punch Head
CAT. N°:	52078
WEIGHT:	2,1 kg
CAPACITY:	100 mm (round holes) 92 × 92 mm (square holes) 46 × 92 mm (rectangular holes)

Punch dies and accessories are sold separately.



HOLE PUNCHING DIES & ACCESSORIES

Standalone Hole Punch & Die

Catalog N°	Hole Punches for Punching Round Holes through max. 3 mm ST37 steel plates
44058	Hole Punch ST16 (16,2 mm)*
44063	Hole Punch ST20/PG13 (20,4 mm)*
44068	Hole Punch ST25 (25,4 mm)*
44073	Hole Punch ST32 (32,5 mm)**
44078	Hole Punch ST40 (40,5 mm)**
44083	Hole Punch ST50 (50,5 mm)**
44088	Hole Punch ST63 (63,5 mm)**
44093	Hole Punch PG16 (22,5 mm)*

* Requires the use of 9,5 mm draw bolt (44098) and 1× Spacer No. 4 included in the Set of Spacers (44108)

** Requires the use of 19 mm draw bolt (44103) and Spacer No. 1 and 2 included in the Set of Spacers (44108).

Hole Punch Set

Catalog N°	Hole Punch-Set featuring ST16/20/25/32/40 Hole Punches and Dies, 3 Spacers, 2 Draw Bolts and 1 Pre-drill
44113	Hole Punch-set



Hole Punching Accessories

Catalog N°	Accessories
44098	9,5 mm Draw Bolt required for ST16/20/PG13/ST25 punches
44103	19 mm Draw Bolt required for ST32/40/50/63 punches
44108	Set of Spacers required for all Hole Punch sizes

INTERCHANGEABLE HEADS

CRIMP HEADS

LR-60B Crimp Head for holding round shape crimping dies within the capacity range. Features a slim and ergonomic latching system, allowing for work in tighter spaces. 4P-6 4PIN™ Die-less Crimp Head for crimping standard lugs without crimping dies.

NAME:	LR-60B	NEW 4P-6 4PIN™
CAT. N°:	47753	52283
WEIGHT:	1,5 kg	2,6 kg
CAPACITY:	6 mm ² – 300 mm ²	10 mm ² – 400 mm ²

Crimping dies are sold separately.



NEW

4P-6 4PIN™



LR-60B

CRIMPING DIES FOR LR-60B CRIMP HEAD

Round Crimping Dies for crimping DIN type copper lugs and connectors

Catalog N°	Cross Section mm ²
44173	6
44178	10
44183	16
44188	25
44193	35
44198	50
44203	70
44208	95
44213	120
44218	150
44223	185
44228	240
44233	300

54723 – Crimp Die Set DIN Cu 6-300 mm²
(13× crimp dies)

Round Crimping Dies for crimping standard type copper tubular lugs and connectors

Catalog N°	Cross Section mm ²
47933	6
47938	10
47943	16
47948	25
47953	35
47958	50
47963	70
47968	95
47973	120
47978	150
47983	185
47988	240
47993	300

54303 – Crimp Die Set STD Cu 6-300 mm²
(13× crimp dies)

Round Crimping Dies for crimping DIN type aluminium lugs and connectors

Catalog N°	Cross Section mm ²
44243	16-25
44248	35
44253	50
44258	70
44263	95-120
44268	150
44273	185
44278	240



RE 600

ELECTRICAL TOOLS

NEW

KEY FEATURES

- Head remains attached to tool for maximum efficiency when performing only one task.
- Optimized for length and weight.
- 360° Head Rotation for more flexibility in confined spaces.

SPECIFICATIONS

- 60 kN (6-ton) hydraulic force output.
- Approximate cycle time: 5 seconds.
- Temperature range: -10°C to 50°C.
- Power: RIDGID® 18 V Advanced Lithium Battery platform.
- All tools come with two batteries, charger and carrying case.



RE 600 SC CU/AL



RE 600 SC ACSR



RE 600 RDH



RE 600 4PI

RE 600 SC CU/AL

Designed for cutting up to 50 mm dia. copper/aluminum building wire and 50 mm dia. fine stranded copper wire.

Catalog No.	Description	Weight	
		lb.	kg
57638	RE 600 SC CU/AL Cutting Tool	10.4	4.7

RE 600 SC ACSR

Designed for cutting up to 30 mm diameter ACSR.

Catalog No.	Description	Weight	
		lb.	kg
57608	RE 600 SC ACSR Cutting Tool	10.4	4.7

RE 600 RDH

- Designed for crimping lugs and connectors up to 300 mm².
- Features a slim latching round crimp head for holding 60 kN round crimp dies.
- Compatible with 60 kN dies from RIDGID and other manufacturers.
- See page 7 (Crimping Dies For LR-60B Crimp Head) for a full list of available RIDGID 60 kN crimping dies.

Catalog No.	Description	Weight	
		lb.	kg
57578	RE 600 RDH Crimp Tool	9.2	4.2

RE 600 4PI

Designed for 4-point indent crimping of standard copper lugs from 10 to 400 mm² without the use of crimping dies.

Catalog No.	Description	Weight	
		lb.	kg
57668	RE 600 4PI Crimp Tool	10.4	4.7

RE 60-MLR

MANUAL HYDRAULIC CRIMPING TOOL

Easy & effortless crimping up to 300 mm²



FEATURES AND BENEFITS

- 60 kN Hydraulic force output and 18 mm stroke to easily accommodate lugs and connectors up to 300 mm² (Cu) and 240 mm² (Al).
- RIDGID® RapidAdvance System™ quickly engages the lug in just one pump to minimize unnecessary pumping.
- Built-in pressure relief-valve signals when the maximum force is reached and crimping is complete.
- 330° Head rotation with small latching crimp head for maximum flexibility and easy access in tight spaces.
- Rubber grips for superior comfort and control.
- Best-in-class size (length) of 425 mm and weight: 2,8 kg.
- Die slot marking decals in the case for faster crimping die identification and retrieval.



FULL FLEXIBILITY & ACCESSIBILITY
Small crimp head and 330° head rotation



MAXIMUM PRODUCTIVITY
RIDGID RapidAdvance System™ – one pump to engage the lug



EASY ONE-MAN OPERATION
Light-weight compact 60 kN crimping tool, only 2.8 kg



EXTREME LOW HANDLE FORCE
Effortless crimping up to 300 mm²

Catalog No.	Model No.	Description	Weight		Std. Pack
			lb.	kg	
53118	RE 60-MLR	RE 60-MLR + Case (no dies)	16.31	7,40	1
53123	RE 60-MLR Cu STD	RE 60-MLR with Cu STD dies (includes 11× dies, 16-300 mm ²)	19.40	8,80	1
53128	RE 60-MLR Cu DIN	RE 60-MLR with Cu DIN dies (includes 11× dies, 16-300 mm ²)	19.40	8,80	1
53133	RE 60-MLR Al DIN	RE 60-MLR with Al DIN dies (includes 8× dies, 16-240 mm ²)	16.76	7,60	1
53283	-	RE 60-MLR Case Only	9.70	4,40	1

RE 130-M

MANUAL HYDRAULIC CRIMPING TOOL

Introducing the world's lightest and easiest-to-use 130 kN Manual Hydraulic Crimp Tool with C-Frame



SPECIFICATIONS

- 130 kN hydraulic force output and 42 mm stroke to easily accommodate large size lugs and connectors (up to 400 mm² Cu);
- RIDGID® RapidAdvance System™ quickly engages the lug in just 2 pumps to minimize unnecessary pumping;
- Built-in Pressure Relief-valve which signals when the maximum force is reached and crimping is complete;
- 330° head rotation for better access in tight spaces;
- Rubber grips for superior comfort and control;
- Length: 557 mm; Weight: 5.3 kg;
- Capacity: Max. 400 mm² Cu; Max. 300 mm² Al;

FEATURES

- Lightest 130 kN tool on the market*, for more portability and ease of use;
- Unique RIDGID® RapidAdvance System™ for quickly engaging and crimping the lug;
- Low handle force reduces hand strain and operator fatigue;
- Industry exclusive Head Stand allows for one-man operation. Easily position cable / lug between the dies and complete the crimp;
- 15 slots for crimping dies in the carrying case with special slot decals for quick die identification and retrieval.

* Among C-Frame Style Manual Hydraulic Crimp Tools with 400 mm² CU capacity.



LOW HANDLE FORCE
Less hand strain & operator fatigue



EXCLUSIVE HEAD STAND
Easy one-man operation



RIDGID® RAPIDADVANCE SYSTEM™
Quickly engage the lug in just 2 pumps!



DIE SLOT DECALS
Quick die identification & retrieval

Catalog No.	Model No.	Description	Weight		Std. Pack
			lb.	kg	
48378	RE 130-M	RE 130-M + Case (no dies)	25.3	11,5	1
48968	-	RE 130-M Case Only	12.7	5,80	1
48988	-	RE 130-M Head Stand Only	0.6	0,30	1
51698	RE 130-M Cu DIN	RE 130-M with Cu DIN dies (includes 11× dies, 16-300 mm ²)	32.1	14,6	1
51708	RE 130-M Cu STD	RE 130-M with Cu STD dies (includes 12× dies, 16-400 mm ²)	32.8	14.9	1

PROFESSIONAL TOOL STORAGE SYSTEM

Introducing The Jobsite Office



Made of high impact resin.



Water & dust seal for equipment protection.



Heavy duty design for professional use.



Lockable system (lock not included)



Metal stop prevents lid collapse.



PRO TOOL TOP ORGANIZER

Easy store & pick of small parts and accessories. Includes: 6 removable bins & 2 dividers to fit every work demand



PRO MOBILE TOOL CART

Wide storage space. System locking bar storage. Removable lid. Includes: sturdy telescopic metal handle, all terrain wheels, integrated tool bar



PRO MEDIUM TOOL BOX

Wide storage options for power tools, hand tools and accessories. Includes: 2 handles on the side, 1 central handle and a tool caddy to keep small tools handy



PROFESSIONAL TOOL STORAGE SYSTEM

Multiple configurations to match every job's need. Kit; includes the above; cat nos: 54338, 54343, 54348.

Catalog No.	Description	Dimensions (cm) (L x W x H)	Weight (kg)	Capacity	
				(l)	(kg)
54338	Pro Tool Top Organizer	56.4 x 35 x 16.5	3.6	14.5	45
54343	Pro Medium Tool Box	56.4 x 35 x 31	4.6	36	60
54348	Pro Mobile Tool Cart	56.4 x 46.5 x 48	8.0	56	75
54358	Professional Tool Storage System	56.4 x 46.5 x 85.9	16.2	106.5	180

HC-2W / RB-3W Handheld Drilling Motor

RIDGID® HC-2W & RB-3W Diamond Drill Systems always get your job done, be it to drill hard or soft materials, wet or dry, small or large diameters.

HC-2W Motor Features:

- Versatile: Suitable for dry or wet drilling.
- Freehand drilling in brickwork up to 5¼" (132 mm), freehand wet drilling in concrete up to 3¼" (82 mm); wet drilling in reinforced concrete up to 5¼" (132 mm) when using the stand (Cat. No. 59016).
- Regulation of waterflow located on the handle, for optimal control during handheld operation.
- Overload indicator (LED) gives visual feedback while drilling.

RB-3W System Features:

- Combined base for vacuum or anchor fixing.
- 4 Adjustment screws for perpendicular drilling.
- 2 Support arms for extra rigidity.
- Built-in spirit levels.



Catalog No.	Model No	Description	Weight	
			lb.	kg
26721	Handheld Drilling Motor HC-2W	HC-2W, Hand-held Dry and Wet Drill, 230 V, PRCD	13¼	6,0
34511	RB-3W Motor	RB-3W Dry and Wet Drilling Motor, 230 V, PRCD	13½	6,1
34501	RB-3W Drilling System	RB-3W Motor, 230 V + Stand + Anchoring Set	13½	6,1

RB-208/3 / RB-214/3 Drilling System

RIDGID® RB-208/3 & RB-214/3 are a high range of professional, lightweight core systems for precision diamond drilling applications in heavily reinforced concrete, masonry, refractory, asphalt, stone and other materials.

System Features:

- Quick-acting connection of machine to the stand.
- Overload indicator (LED) gives visual feedback while drilling.
- External water seal for easy replacement.
- Replaceable brushes.
- Moto cooling system for heavy duty application.
- Gearbox with integrated oil pump for continuous lubrication.
- Carrying handle on the motor.



Catalog No.	Model No	Description	Weight	
			lb.	kg
33411	Drilling System RB-208/3	RB-208/3, 230 V Motor + Stand + Anchoring Set + Wrenches	61¼	28,0
35091	Drilling System RB-214/3	RB-214/3, 230 V Motor + Stand + Anchoring Set + Wrenches	68¼	31,0

Water pressure tank

- Steel tank. Capacity: 10 l. Pressure: 6 bar.
- Pump, hose and coupling holders.

Catalog No.	Description	Weight	
		lb.	kg
46783	Water Pressure Tank 10 l / 6 bar		



Manual leverage and ratchet action cutters

Light-weight & compact design for ergonomic use.

Special curved and surface-grinded blades made of high-coated steel for extended durability and blade lifetime.

Robust design with impact resistant coated and hardened handles for Heavy-Duty use.



For more details visit RIDGID.com/warranty



Manual Ratchet Action Cutters

- Easy and fatigue-proof cutting thanks to the special & durable Ratchet Mechanism.
- Long Ergonomic Handles (RC-70) provide easier cuts on large size cables.
- One-handed effortless cutting of cable with the RC-40 and RC-55.
- Safe and convenient use thanks to the Pawl Release allowing blades to be released any time during cutting.
- Safer use thanks to the lock/unlock mechanism.
- Special ergonomic soft-grip handles for comfortable use.
- Special design cutter blades with the longest lifetime.
- NEW: The models RC-336 and RC-556 are specifically designed for easy and fast cutting of ACSR-cable up to 18 mm OD.



Model No.	RC-40	RC-55	RC-70	RC-336	RC-556
Cat. No.	54288	54293	54298		
Conductor Material	Copper and Aluminium			ACSR	
Max. Cable Capacity (w/ insulation)	40 mm	55 mm	70 mm	13 mm	18 mm
Weight	0,7 kg	1,5 kg	2,9 kg	0,8 kg	1,7 kg
Length	240 mm	310 mm	550 mm	240 mm	310 mm
Cable Type	Class 2 Stranded Conductor and Class 5 Flexible Conductor to DIN VDE 57295			ACSR	

Manual Leverage Cutters

- Longer Handles for more leverage and fatigue-proof cable cutting.
- Special ergonomic handle grips for more comfortable use.
- Designed for Heavy-Duty use with impact resistant handles.
- Durable and long-lasting cutter blades designed for the toughest cutting jobs.






Model No.	MC-20	MC-30	MC-50
Cat. No.	54273	54278	54283
Conductor Material	Copper and Aluminium		
Max. Cable Capacity (w/ insulation)	120 mm ² & 20 mm	250 mm ² & 31 mm	500 mm ² & 50 mm
Weight	0,7 kg	1,4 kg	3,0 kg
Length	360 mm	525 mm	770 mm
Cable Type	Class 2 Stranded Conductor and Class 5 Flexible Conductor to DIN VDE 57295		

LOCATING EQUIPMENT

RIDGID® SEEKTECH® LOCATING RECEIVERS

RIDGID locating receivers feature an easy-to-use visual mapping display that allows you to locate utility lines and sondes/beacons with confidence. Use with a SeeSnake® camera equipped with a sonde transmitter to locate the camera head during an inspection or use with a line transmitter to find buried utilities. These locators can also find flushable float sondes and remote transmitters attached to a push rod or drain cable.

	SeekTech SR-20	SeekTech SR-24	SeekTech® SR-60
			
	21943	46393	30123
Bluetooth® & GPS	No	Yes	No
Omni-Directional Mapping Display	Yes	Yes	Yes
User-Defined Frequencies	Yes up to 35 kHz	Yes up to 35 kHz	Yes - All Available
Number of Active Line Trace Frequencies	All up to 35 kHz	All up to 35 kHz	All up to 93 kHz
Sonde Frequencies	All up to 35 kHz	All up to 35 kHz	All up to 93 kHz
Passive Search	Omni-Seek (searches all passive bands at once)	Omni-Seek (searches all passive bands at once)	Omni-Seek (searches all passive bands at once)
Depth	Continuous	Continuous	Continuous
Weight w/batteries	1.8 kg / 3.5 lbs.	1.5 kg / 3.3 lbs.	2.3 kg / 5.1 lbs.
Screen Size	Medium	Medium	Large
Graphic Display	Advanced	Advanced	Advanced

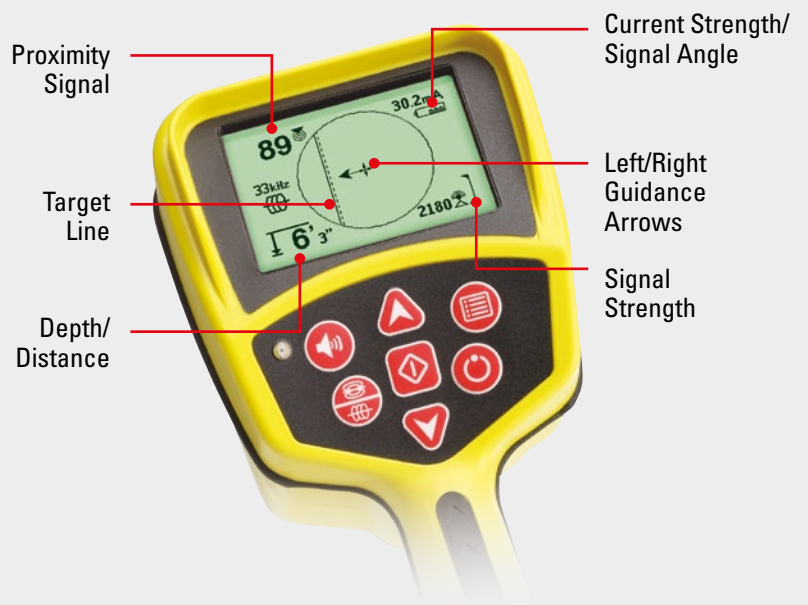
Performance

The mapping display confirms a good locate signal and identifies distortion in congested areas using:

- Target-Line – Guides the operator down the line and shows changes in direction.
- Left-Right Guidance Arrows – Points the operator to the target utility.
- Proximity Signal and Signal Strength – Helps the operator center the locator closer to the target for more confident locates.

Other Features

- Continual Depth – Increases productivity by showing depth changes in real-time.
- Omni-Seek® – Increases accuracy and efficiency when searching in passive mode. Continuously searches passive power and radio bands to locate and avoid unknown metallic lines.



LOCATING EQUIPMENT

RIDGID® TRANSMITTERS

Accurately trace buried utilities by applying a signal with a RIDGID Line Transmitter. All transmitters have multiple frequency options and are capable of applying a signal by direct connection and induction. Powerful 5 W and 10 W transmitters apply a strong signal making for easier locates.

- Choose the ST-33Q+ for its unsurpassed induction capabilities as well as its versatility in direct connect mode.
Works also with Bluetooth enabled locators (SR-24) to automatically change frequency and power settings from the receiver.
- Choose the ST-510 for added power in direct connect mode.
- Choose the ST-305 for power and portability.

	SeekTech ST-33Q+	SeekTech ST-510	SeekTech ST-305
			
	49343	21953	21948
Bluetooth®	Yes	No	No
Max Power Output	5 W	10 W	5 W
Digital Display	Yes	Yes	No
Line Trace Frequencies	All up to 93 kHz	5*	4
Inductive Frequencies	2	5*	3
Simultaneous Transmit 2 Line Frequencies	No	No	Yes
Weight w/batteries	11.1 lbs. / 5.0 kg	9 lbs. / 4.1 kg	2.5 lbs. / 1.2 kg
Antenna size	Very large	Medium	Small
Batteries	6 x D (optional) or 18 V Li Battery	8 x D	4 x C

* The ST-510 Transmitter can also be set to frequencies used by other manufacturers' equipment.

A Line transmitter is connected to a pipe/cable in order to induce a frequency.

Set the receiver to this frequency to trace this line. This is ACTIVE locating.

More power = locate longer distances.

More frequencies = to select the best frequency for the application.

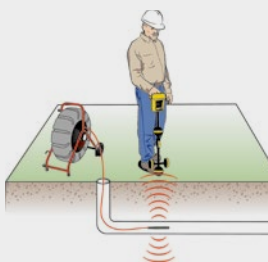
The larger the internal antenna, the better suited for "Induction".



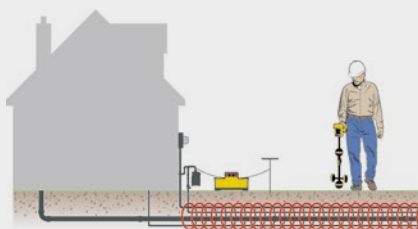
SeekTech Inductive Signal Clamp

- Allows users to apply a signal to a cable or pipe when direct connection is not possible.
- Compatible with all RIDGID® transmitters.

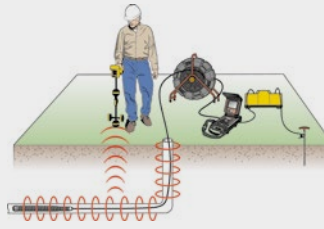
Catalog No.	Description	Weight	
		lb.	kg
20973	SeekTech 4" (100 mm) Inductive Signal Clamp	2	0,9



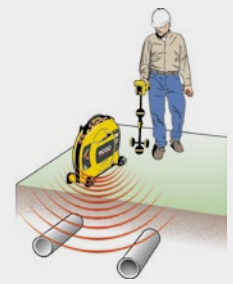
Find sondes/beacons.



Direct connect to utility lines.



Find plastic pipe with integral line trace.



Induce a signal to locate utilities.

A-Frame Fault Locator

The RIDGID® A-Frame Fault Locator is a purpose built system to simplify the location of ground faults in direct buried insulated wire.

- Purpose-built directional fault finder.
- Locates insulation faults up to 2 megohms.
- Reference readout to determine fault location.
- Durable, lightweight powder-coated aluminum frame.
- Weather proof membrane buttons.

Specifications

FT-103 Transmitter:

Operating Frequencies:

- Direct Fault Finding: 797 Hz - "dFF" displayed.
- Path locating: 128 Hz, 1 kHz, 8 kHz, 33kHz, 93 kHz.
- Direct Connect: 128 Hz, 1 kHz, 8 kHz, 33kHz, 93 kHz.
- Inductive Clamp: 8 kHz, 33 kHz, 93 kHz.
- Broadcast Inductive: 33 kHz, 93 kHz

Load Range: 5 Ω to 2M Ω

Output Power: Up to 3 Watts (Low, medium and high settings)

Output Voltage: 5 Volts - 600 Volts

Power Supply: 8 × C-Cell Batteries (Included)

Dimensions (L × W × H): 21.6 × 14.7 × 6.4 cm
(8.5" × 5.8" × 2.5")

FR-30 A-Frame Receiver:

Fault Finding Depth: Up to 6 m (20')
(depending on conditions)

Fault Finding Length: Up to 4.8 km (3 miles)
(depending on conditions)

Display: Black and White LCD

Power Supply: 6 × AA Batteries (Included)

Dimensions (L × W × H): 77 × 77.2 × 3.8 cm
(30.3" × 30.4" × 1.5")

IP Protection: IP54



Standard Equipment: FR-30 A-Frame Receiver, FT-103 Transmitter, ground stake, red and black test leads, carry cases, batteries, operator's manual pack

Catalog No.	Description	Weight	
		lb.	kg
56613	A-Frame Receiver (FR-30) and Transmitter (FT-103)	5.2	2.3

Used alone or together with:

Catalog No.	Description	Weight	
		lb.	kg
20973	SeekTech 4" Inductive Signal Clamp	2.0	0.9
30123	SeekTech SR-60 Line Locator	5.1	2.3
46393	SeekTech SR-24 Line Locator with Bluetooth® and GPS	4.0	1.8
21943	SeekTech SR-20 Line Locator	4.0	1.8

MR-10 Magnetic Locator

- Quickly locate buried iron or steel objects such as:
 - Valve/Curb Boxes
 - Well Casings
 - Manhole Covers
 - Reinforced Septic Tanks
 - Cast Iron Pipes
 - Survey Pins
 - Steel Enclosures
- Ergonomic rugged design includes carrying case and batteries.
- Highly sensitive instrument with audio and visual feedback.
- AutoNull feature blocks out nearby metallic interference such as an automobile or chain link fences.

Specifications

Display: Black and White LCD

Speaker: Durable Mylar Speaker

Body Material/Construction: Aluminum Tube with Recessed Controls

Length: 100 cm (39.25")

Operating Temperature: -18°C to +49°C

Storage Temperature: -25°C to +60°C

IP Protection: IP54

Power Supply: 6× AA Alkaline Batteries (Included)



Catalog No.	Description	Weight	
		lb.	kg
53068	MR-10 Magnetic Locator with Case	1.7	0.77

micro IR-200 Non-Contact Infrared Thermometer

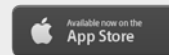
- Ultra Sharp Dual Class II Lasers easily identify the surface area being measured.
- 30 To 1 Distance To Spot Ratio allows you to take more accurate measurements from a farther distance.
- Adjustable Emissivity to accurately measure the temperature of virtually any surface.
- Audible and Visual High and Low Alarms quickly alert you to temperatures outside of the ranges that you set.
- Bright Backlit Display which can be toggled on in poorly lit areas.
- Tripod Mount Capable for repeatable, precise temperature measurements.



Includes soft carrying case and 1x 9 V battery

Catalog No.	Model No.	Description	Weight		Std. Pack
			lb.	kg	
36798	micro IR-200	Non-Contact Infrared Thermometer	0.5	0,2	1

Laser Distance Meters



micro LM-100

- Ultra Sharp Class II Lasers clearly highlight the point being measured.
- Exceptional Distance Range allows accurate measurements up to 50 m.
- Adjustable Units enable you to quickly read in feet, inches or meters on the fly.
- Bright Backlit Display for use in poorly lit areas.
- Quick and Accurate calculations on the spot.
- Measurement calculations: Addition, Subtraction, Area, Volume and Indirect measurements.

micro LM-400

- Clearly view measurements on the large, backlit, 4-line display.
- Inclination angle measurement allows indirect measurements for hard to reach areas.
- Adjust units instantly to inches, feet, or meters.
- Bluetooth® connection to smartphones and tablets to view, store, and share data.
- Android® and iOS® Apps to overlay measurements onto a photo or sketch.
- Measuring Range & Accuracy: 70 m / ±1.5 mm.

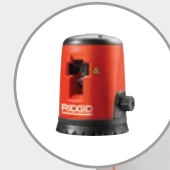
Catalog No.	Model No.	Description	Weight		Std. Pack
			lb.	kg	
36158	micro LM-100	Laser Distance Meter	0.5	0,2	1
36813	micro LM-400	Advanced Laser Distance Meter	0.44	0,22	1

Includes soft carrying case and 2x AAA batteries

micro CL-100 Self-Leveling Cross-Line Laser

- Single knob operation, very easy to use.
- Leveling and alignment jobs done at the blink of an eye.
- Instant projection of super-bright vertical and horizontal lines.
- Laser type: Class 2, 630 - 670 nm.
- Millimeter accuracy: 0,6 mm / 1 m.
- Extended interior range of 30 meters.
- Self-leveling range of $\pm 6^\circ$.
- Integrated 360° swivel base.

Cat. No.	Model No.	Description	Projection	Diode nm	Range m	Weight		Std. Pack
						lb.	kg	
38758	micro CL-100	Self-Leveling Cross-Line Laser kit	Horizontal & Vertical	630-670	30	1.1	0,50	1



Includes rugged plastic carrying case, 3x AAA batteries, Laser Enhancing glasses and Elevating Tripod for free

micro DM-100 Digital Multimeter AutoRanging & True RMS

- Features a double molded drop-proof and water-resistant (1 m) IP67 housing.
- 11 different electrical functions ranging from AC/DC Voltage & Current (1000 V/10 A) to Temperature measurements.
- Rated for industrial use, CAT III - 1000 V & IV - 600 V.
- Extra Large Backlit LCD display for easy and clear readings.
- Overload Protection CAT III (1000 V) & IV (600 V) & 2x Fuses (0.5 A & 10 A - 1000 V).
- Functions: Voltage AC/DC, Current AC/DC, Resistance, Capacitance, Frequency, Duty Cycle, Diode Check, Continuity Test, Temperature.

Catalog No.	Description	Weight	
		lb.	kg
37423	micro DM-100 Digital Multimeter	0.84	0,38

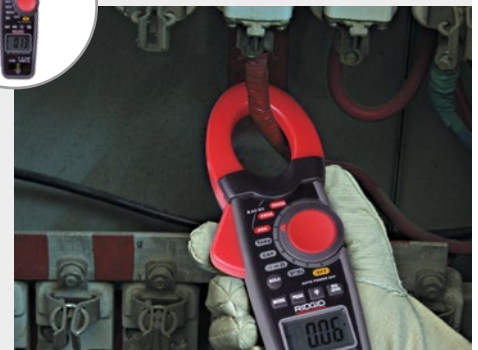


Includes soft carrying case, double molded test leads, Type K temperature probe and a 9 V battery

micro CM-100 Digital Clamp Meter AutoRanging & True RMS

- Large Capacity, clamp around cables up to 30 mm diameter.
- Large Measuring range, up to 1000 A.
- AC/DC Current Range: 40 A / 400 A / 1000 A.
- Clear & Accurate readings on the large backlit LCD with Bargraph Display.
- 10 functions in one: Voltage AC/DC, Current AC/DC, Resistance Capacitance, Frequency, Diode & Continuity Test, Temperature.
- Overload Protection: CAT III - 600 V.

Catalog No.	Description	Weight	
		lb.	kg
37428	micro CM-100 Digital Clamp Meter	0.66	0,3

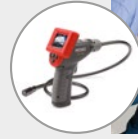


Includes soft carrying case, test leads, Type K temperature probe and a 9 V battery

micro CA-25 Inspection Camera

Features a 17 mm aluminium imager head with 4 ultra-bright LED lights, bringing superior image quality to its 2.4" Colour LCD Screen. It also features Video Out for transferring live images to external devices and 180° Digital Image Rotation for getting upright images.

- Display: 2.4" Colour LCD (Image Rotation: 2x 180°).
- Cable Reach: 120 cm fixed.



Catalog No.	Description	Weight	
		lb.	kg
40043	micro CA-25 Inspection Camera	1.5	0,68



Includes plastic carrying case, 4x AA batteries, RCA Cable, Accessories (Hook, Magnet and Mirror)

micro CA-150 Inspection Camera

Allows you to perform more detailed visual inspections in even harder-to-reach areas.

- Comfortable one-hand grip for steady control while maneuvering camera.
- Large 3.5" color display allows fast diagnosis in tight hidden spaces.
- Illuminate dark areas with 4 bright LEDs on the waterproof aluminium camera head.
- Capture up to 20 still images during inspections to playback on screen later.
- Display: 3.5" (90 mm) colour LCD (320 x 240 resolution).



Catalog No.	Description	Weight	
		lb.	kg
36848	micro CA-150 Inspection Camera	5.5	2,50

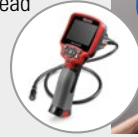


Includes plastic carrying case, 4x AA batteries, RCA Cable, Accessories (Hook, Magnet and Mirror)

micro CA-330 Inspection Camera

Connects to your smartphone or tablet for a live second screen and instant file sharing of pictures and videos through Wi-Fi™ and Bluetooth™.

- Easily record still images and videos of problems in hard-to-reach areas.
- Connect to a mobile device for a live second screen and instant file sharing of pictures and videos.
- Comfortable pistol grip design, large 3.5" screen, best-in-class image quality and easy to use interface.
- Illuminate dark spaces with four bright LEDs on the rugged aluminum 90 cm imager head (extendable with optional cables up to 9 meters).
- Wireless recording of audio commentary on video inspections with included Bluetooth™ headset.
- Free RIDGID VIEW App for iOS™ and Android™.



Catalog No.	Description	Weight	
		lb.	kg
49628	micro CA-330 Inspection Camera	5.5	2,50
37083	micro CA-330 3.7 Li-Ion battery	0.24	0,1
37123	micro CA-330 hook/magnet/mirror	0.24	0,1
40453	micro CA-330 Power Adapter	0.24	0,1



Includes: micro CA-330 with 17 mm imager, battery, charger, USB cable, hook, magnet and mirror, RCA cable, AC adapter, headset with microphone, 4 GB SD card.

Download the FREE RIDGID VIEW App!



micro CA-350 Inspection Camera

Comes with new RIDGID 12 V Li-ion battery platform for much longer run-times and faster battery charging.

- Easily record still images and videos of problems in hard-to-reach areas.
- 12 V rechargeable Lithium-Ion battery provides longer runtime for extended inspections.
- Comfortable pistol grip design, large screen, and easy to use interface.
- Illuminate dark spaces with 4 bright LEDs on the waterproof aluminum camera head.
- Get the perfect view with enhanced features like image rotation and digital zoom.



Catalog No.	Description	Weight	
		lb.	kg
55903	micro CA-350 Inspection Camera	2	0,9
55183	micro CA-350 12 V Li-Ion Battery	0.24	0,1
55198	micro CA-350 12 V Li-Ion 230 V Charger	0.24	0,1



Includes: micro CA-350 with 17 mm imager, battery, charger, USB cable, hook, magnet and mirror accessories, RCA cable, AC adapter, headset with microphone, 8 GB SD card.

**12 V LI-ION BATTERY UPGRADE
LONGER RUN-TIMES
FASTER BATTERY CHARGING**



Extension Cables

Extend your CA-150, CA-330 & CA-350 Inspection camera up to 30' (9 m).

Catalog No.	Description	Weight	
		lb.	kg
37103	17 mm Replacement Imager	0.7	0,3
37098	6 mm Imager with 1 m Cable	0.24	0,1
37093	6 mm Imager with 4 m Cable	0.9	0,4
37108	Universal 3' (90 cm) Cable Extension	0.75	0,3
37113	Universal 6' (180 cm) Cable Extension	1.5	0,68

Plastic Conduit Pipe Cutters

For easy cutting of plastic conduit pipe up to 63 mm diameter. Intended plastic materials: PVC, CPVC, PP, PEX, PE, Rubber hose.

SINGLE STROKE CUTTERS:

- Spring loaded handles for faster positioning. Single stroke, easy cut.
- PC-1250 features a reversible blade providing two times blade life.
- PC-1375 ML: durable aluminium construction for heavy-duty use.

Catalog No.	Model No.	Description	Capacity (O.D.)	Weight		Std. Pack
			mm	lb.	kg	
23488	PC-1250	Single Stroke Tubing Cutter	3 - 42	½	0,22	6
26803	PCB-1250	PC-1250 Replacement Blade	–	½	0,05	1
23493	PC-1375 ML	Single Stroke Tubing Cutter	3 - 35	¾	0,34	6
25588	PCB-1375	PC-1375 Replacement Blade	–	½	0,05	1



RATCHET CUTTERS WITH ERGONOMIC GRIPS:

- Ratchet action for quick and easy cutting of plastic conduit pipe.
- Ergonomic grips on bottom handle are spaced at ½" increments to act as a quick pipe measuring scale.
- X-CEL® pin for quick (no tool needed) change of blade.

Catalog No.	Model No.	Description	Capacity (O.D.)	Weight		Std. Pack
			mm	lb.	kg	
23498	RC-1625	Ratchet Action Plastic Pipe & Tubing Cutter	3 - 42	1¾	0,52	1
27858	RCB-1625	RC-1625 Replacement Blade	–	½	0,03	1
30088	RC-2375	Ratchet Action Pipe & Tubing Cutter	12 - 63	1¾	0,90	1
30093	RCB-2375	RC-2375 Replacement Blade	–	¼	0,10	1



Nº 87 ACSR Cable Trimmer

FOR FAST, ACCURATE CABLE SPLICE PREPARATION

- Trims 85 sizes of ACSR cable from 8 AWG to 1,780,000 circular mills (C.M.).
- Bushings for 9 popular cable sizes from 1/0 AWG through 1,780,000 C.M. available from stock.
- The operation of the tool is similar to that of a conventional tubing cutter.
- The bushing holder, cutter and handy carrying case are sold as one unit.
- Case contains storage sockets for 11 bushings. Twelfth bushing is stored in holder.

Catalog No.	Model No.	Description	Weight		Std. Pack
			lb.	kg	
54135	87	ACSR Cable Trimmer, includes Bushing Holder, Cutter, and Carrying Case	9½	4,30	1
54270	E-4695	Cutter Wheel	1	0,02	1



Aluminum Pipe Wrenches

- Nearly 40% lighter than comparable cast-iron wrenches.
- Jaws and all other parts identical to RIDGID® heavy-duty wrenches.
- Professional strength in lightweight aluminum.
- Offers the same durability and ease-of-use found in all RIDGID heavy-duty wrenches.

Catalog No.	Model No.	Nom. Size ⁽¹⁾		Pipe Capacity ⁽²⁾		Weight		Std. Pack
		in.	mm	in.	mm	lb.	kg	
31090	810	10	250	1½	40	1	0,4	6
47057	812	12	300	2	50	2½	1,1	6
31095	814	14	350	2	50	2½	1,1	6
31100	818	18	450	2½	65	3¾	1,7	6
31105	824	24	600	3	80	6	2,7	6
31110	836	36	900	5	125	11	5,0	1
31115	848	48	1200	6	150	18½	8,4	1



Heavy-Duty Pipe Wrenches

- Sturdy, cast-iron housing and I-beam handle with full floating forged hook jaw, featuring self-cleaning threads with replaceable hook and heel jaws.

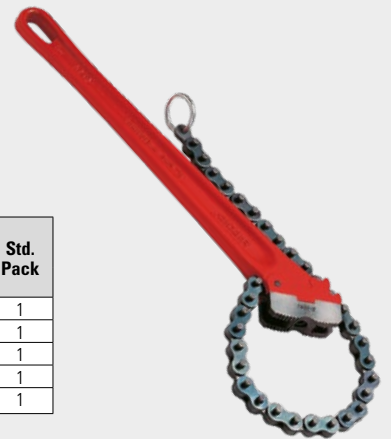
Catalog No.	Model No.	Nom. Size ⁽¹⁾		Pipe Capacity ⁽²⁾		Weight		Std. Pack
		in.	mm	in.	mm	lb.	kg	
31000	6	6	150	¾	20	½	0,2	6
31005	8	8	200	1	25	¾	0,3	6
31010	10	10	250	1½	40	1¾	0,8	6
31015	12	12	300	2	50	2¾	1,2	6
31020	14	14	350	2	50	3½	1,6	6
31025	18	18	450	2½	65	5¾	2,6	6
31030	24	24	600	3	80	9¾	4,4	3
31035	36	36	900	5	125	19	8,7	1
31040	48	48	1200	6	150	34¼	15,6	1
31045	60	60	1500	8	200	51¼	23,3	1



Chain Wrenches

- A double jaw gives fast, ratchet-like action in either direction.
- The heavy-duty model has replaceable alloy steel jaws.
- The light-duty model has a one-piece forged alloy steel handle and jaw. Ideal for use in close quarters.

Catalog No.	Model No.	Description	Rated Pipe Capacity ⁽³⁾		Actual O.D. Capacity ⁽⁴⁾		Chain Length		Weight		Std. Pack
			in.	mm	in.	mm	in.	mm	lb.	kg	
31310	C-12	Light-Duty Chain	2	50	4	100	15¾	390	1¾	0,8	1
31315	C-14	Heavy-Duty Chain	2	50	5	125	18½	460	2¾	1,2	1
31320	C-18	Heavy-Duty Chain	2½	60	5	125	20¼	500	6	2,7	1
31325	C-24	Heavy-Duty Chain	3	75	5	125	20¼	500	8¼	3,7	1
31330	C-36	Heavy-Duty Chain	4½	110	7½	185	29	725	15¾	7,1	1



Multi-Purpose 6-in-1 Screwdriver

- Includes #1 and #2 Phillips® tip, ⅜" and ¼" flat tip, ⅝" and ¼" nut drivers in the shaft.
- Contoured cushioned grip for increased grip and torque.
- Ball/spring retention shaft with positive snap-fit locking handle.

Cat. No.	Model No.	Description	Body		Weight		Std. Pack
			in.	mm	lb.	kg	
16573	1974	6-in-1 Screwdriver	8	203	0,24	0,11	12



(1) Nominal size = length of handle.

(2) Pipe capacity = maximum nominal diameter of steel pipe.

(3) Rated pipe capacity = nominal diameter that can be correctly tightened.

(4) Actual O.D. capacity = actual O.D. that can be gripped.

Heavy-Wall Conduit Benders

- Designed for the larger sizes of heavy-wall conduit. This bender has hardened teeth for slip-resistant grip.
- Extra-long supporting socket minimizes handle breakage.
- Notch in radius protects conduit threads.
- Handles not included.

Catalog No.	Model No.	Capacity	Weight		Std. Pack
			lb.	kg	
35230	B-1709	½" (12 mm) - ½" (12 mm)	2⅝	1,20	1
35235	B-1711	½" (12 mm) - ¾" (19 mm)	2¾	1,30	1
35240	B-1712	1" (25 mm) - 1¼" (32 mm)	7¾	3,50	1



Thin-Wall Conduit Benders

- Made of cast iron, these tools have exceptionally smooth side walls which grip conduit snugly to minimize distortion.
- Bending grooves conform to Standard Code Radii. Marks indicate 30°, 45°, 60° and 90° bends.
- Handles not included.

Catalog No.	Model No.	Description	Weight		Std. Pack
			lb.	kg	
35215	B-1677	Bends ½" (12 mm) Thin-Wall Conduit to 4" (100 mm) Inside Radius	2½	1,1	1
35220	B-1678	Bends ¾" (19 mm) Thin-Wall and ½" (12 mm) Heavy-Wall Conduit to 5" (127 mm) Inside Radius	4½	2,0	1
35225	B-1679	Bends 1" (25 mm) Thin-Wall and ¾" (19 mm) Heavy-Wall Conduit to 6½" (165 mm) Inside Radius	8½	3,9	1



Conduit sizing tool

- Quickly resizes thin-wall conduit ends that have become deformed after installation.
- Tool can also be used for slight bending of ½" and ¾" conduit ends for alignment purposes.
- Hardened alloy steel resists wear.

Catalog No.	Model No.	Description	Weight		Std. Pack
			lb.	kg	
36005	575	½" (12 mm) and ¾" (19 mm) EMT	1	0,5	1



Hand Threader & Die Heads for conduit Pipes

- Ratchet knob indicates forward and reverse.
- Die heads snap in from both sides and lock in place.

Catalog No.	Model No.	Description	Weight		Std. Pack
			lb.	kg	
37777	11-R	Ratchet & Handle Only	6	2,4	1

(ISO) Alloy RH	75005	75010	75015	75020
Nominal Pipe Size (mm)	20	25	32	40



Knockout Kits / Sets

Hydraulic / Manual Knockout Kits

Combines ease of hydraulic operation and precision-ground knockouts to provide clean, quick holes. Available with foot or hand pumps.

- Powerful 11-ton hydraulic ram.
- Pumps equipped with internal safety relief valve.
- Ram and pump equipped with quick disconnect couplers.
- Precision-ground 3-point punch/die sets.
Capacity to 4" in 10 gauge mild or 16 gauge stainless steel



Catalog No.	Model No.	Capacity	Weight		Std. Pack
			lb.	kg	
23477	HKO-186	½" - 2" Hydraulic Kit w/Hand Pump (Includes 2 Draw Bolts, Draw Bar, Spacers, 3' Hose)	31¼	14,30	1
24587	HKO-1810	½"-4" Hydraulic Kit w/Hand Pump	61¼	27,70	1
31797	R739BB	½"-2" Ball Bearing Kit w/Ratchet Wrench & Case	11	5,00	1

Knockout Sets



Catalog No.	Description
23487	No. KOPD-52 Set with ½", ¾", 1", 1¼", 1½", 2" Punches and Dies and Case

- ½"-2" Punch and Die Set with Case.
- Precision-ground 3-point punches.
- Tool steel tough dies.
- Sturdy case.



Catalog No.	Description
23492	No. KOPD-254 Set with 2½", 3", 3½", 4" Punches and Dies and Case

- 2½"-4" Punch and Die Set with Case.
- Precision-ground 3-point punches.
- Tool steel tough dies.
- Sturdy case.

Conduit Size No.	Actual Hole Size		Punch Cat. No.	Punch Weight		Die Catalog No.	Die Weight		Hydraulic Kit Draw bolt No.	Manual Kit Draw bolt No.
	in.	mm		lb.	kg		lb.	kg		
½	⅞	22.5	17497	½	0.2	17547	1	0.5	17602	31802
¾	1⅞	28.3	17502	½	0.2	17552	¾	0.3	17597	31807
1	1⅝	34.6	17507	¾	0.3	17557	1	0.5	17597	31807
1¼	1⅞	43.3	17512	1¼	0.6	17562	1½	0.7	17597	31807
1½	1⅞	49.7	17517	2¼	1.0	17567	2	0.9	17597	31807
2	2⅞	61.8	17522	4	1.8	17572	3¼	1.5	17597	31807
2½	2⅞	74.4	17527	3¼	1.5	17577	3¼	1.5	17597	-
3	3⅞	90.6	17532	5	2.3	17582	5¼	2.4	17597	-
3½	4⅞	103.2	17537	3¼	1.5	17587	3	1.4	17597	-
4	4⅞	116.0	17542	5	2.3	17592	4¼	1.9	17597	-

Hole Saw Kits

Plumber's, electrician's and combination kits each contain a selection of RIDGID hole saws and hole saw arbors for cutting through wood, steel, cast iron, brass and aluminum.



Catalog No.	Model No.	Description	¾"	¾"	1"	1¼"	1½"	1¾"	1¾"	2"	2¼"	2½"	2½"	2½"	3"	3¼"	4½"	Arbors		Weight	
			19 mm	22 mm	25 mm	29 mm	32 mm	35 mm	38 mm	44 mm	51 mm	54 mm	57 mm	64 mm	67 mm	76 mm	92 mm	114 mm	R2S	R5	lb.
81490	1248	Plumber Kit		•		•		•	•			•	•					•	•	3½	1,5
81495	1249	Electrician Kit		•		•		•	•			•	•					•	•	3½	1,5
81500	1250	General Purpose Kit	•	•		•		•	•			•	•					•	•	6¼	2,8
26991	1251	Scandinavia Kit			•		•				•				•	•	•	•	•		



THE RIDGID SR-24 LINE LOCATOR

CONNECTS WITH ANY SMARTPHONE OR TABLET



Via free
RIDGID TRAX



RIDGID

Ridge Tool Europe N.V.
IZ Schurhovenveld 4820
B-3800 Sint-Truiden
Belgium

Tel.: +32 (0)11 598 620
ridgid.eu@emerson.com
RIDGID.com


EMERSON