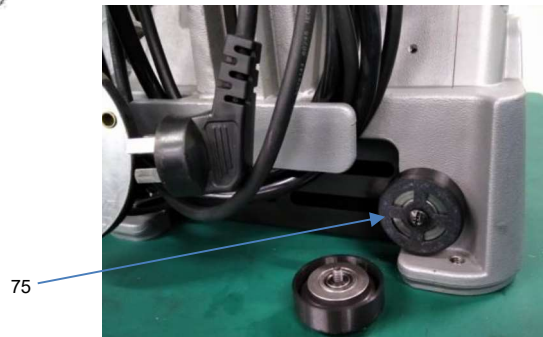
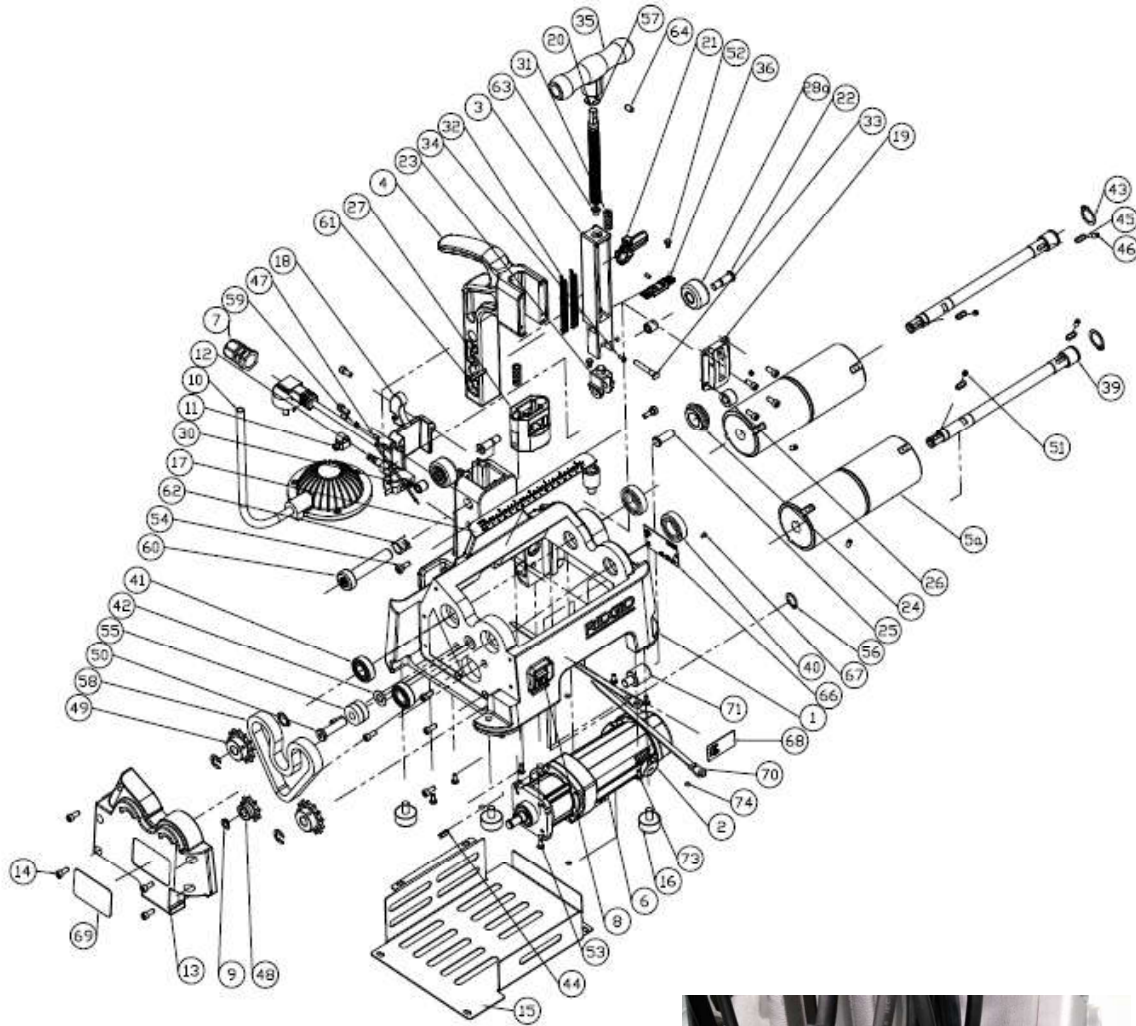


RIDGID PC116/ PTC-400

4. Disassembly steps



POS.	Catalog no.	Description	Remark	Quality
1	NA	Base		1
2	67998 68108	Motor, assembly 220-240V Motor, assembly 100-120V		1
3	67963	Slide		1



## Maintenance and Repair Manual

Page no: 8 of 21  
Date: 3/25/2021  
Approved by:  
Version: 05

### RIDGID PC116/ PTC-400

4	67948	Frame		1
5a	68293	Roller subassembly		1
6	NA	PCBA		1
7	68008 68003 68048 68043	Power line, assembly, Korea Power line, assembly, China Power line, assembly, US Power line, assembly, EU		1
8	68018	Switch		1
9/43/ 56/57	68023	E-RING package		1
10	68033	Foot bulb		1
11	68038	Pipe clamp		1
12	68028	Switch, air		1
13	67943	Cover		1
14	68163	Screw	M5x12	1
15	68183	Sheet, base		1
16	68188	Rubber feet		1
17	68198	Scale		1
18	68013	Hook, wire		1
19	67953	Cover, slide		1
20	68103	Feedscrew		1
21	67958	Latch		1
22	68228	Capscrew, holding		1
23	67968	Holder, blade		1
24	NA	Cutting wheel		1
25	68113	Pin, wheel		1
26	NA	Bearing, wheel		1
27	67973	Housing		1
28a	68298	Holding roller subassembly		1
30	67938	Bearing, holding		1
31	68123	Holding spring		1
32	68128	Spring, slide		1
33	68133	Pin, link		1
34/72	68233	Fix screw package		1
35/64	67983	Handle assembly		1
36/52	67978	Cover assembly		1
39	67993	Shaft, roller		1
40	67908	Bearing, 61904		1
41	67913	Bearing, 6002		1
42	68213	Pad		1
44/45	68088	Key package		1
46	68053	Screw, fix	M5x10	1
47	68178	Head, pin release		1
48	68058	Chain wheel, 9 teeth		1

## RIDGID PC116/ PTC-400

49	68063	Chain wheel, 13 teeth		1
50	68208	Pad. Tension		1
51	68098	Screw, set	M5x5	1
53	68263	Screw, ground	M4x10	1
54	42008	Capscrew, latch		1
55	68193	Bearing		1
58	68068	Chain		1
59	34190	Spring for release		1
60	68173	Pin, release		1
61	41545	Roll pin		1
62	68168	Spring, release		1
63	41577	Bearing		1
66/67	68258 68093	Nameplate, 220-240V Nameplate, 100-120V		1
68/69	68243	Label package		1
70	NA	Tie, cable		1
71	68288	Reamer connect		1
73	68143	Screw, fix	M4x10	1
74	NA	O-ring		1
75	67988	Storage, Spare Wheel		1
	66253	Carbon brushes for the motor		1

### 4.1. Remove frame from base

- Unscrew/remove latch capscrews (54)
- Pull out release pin (60)
- Pull frame (4) from base (1)
- Unscrew/remove set screw (51)
- Remove spring (59)
- Remove pin release head (47)
- Remove release pin (60) and release spring (62)

