


THERMAL IMAGING

RIDGID

QUICK START GUIDE

The RIDGID RT-3, RT-5x, RT-7x, and RT-9x handheld thermal imagers provide best-in-class infrared images for efficient troubleshooting of thermal systems.

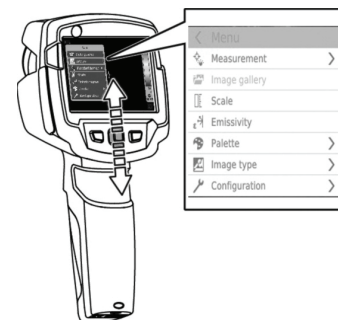
START UP

- 1 Charge the battery with the included AC adapter.
- 2 Press  to turn on the imager. You may hear the unit calibrating the thermal sensor.

ACCESSING THE MENU

The menu allows configuration of emissivity, scale, palette, and other imager parameters.

- 1 Press the OK button to access the menu.
- 2 The menu can be navigated by using the central joystick and selecting the desired option.



SAVING AN IMAGE

- 1 Remove the lens cover and point the imager to the target area.
- 2 Press the trigger. The thermal image is automatically saved.
- 3 Except for model RT-3, a digital camera image is also saved.

DISPLAYING A SAVED IMAGE

Saved images can be viewed in the image gallery.

- 1 Select the "Image Gallery" function from the menu.
- 2 Select an image to view and analyze.

SUPERRESOLUTION



SuperResolution is a technology to improve saved image quality. To use the function, the camera should be handheld and the objects to be imaged should not move.

- 1 Open the SuperResolution function.
- 2 Press OK to activate or disable the function.

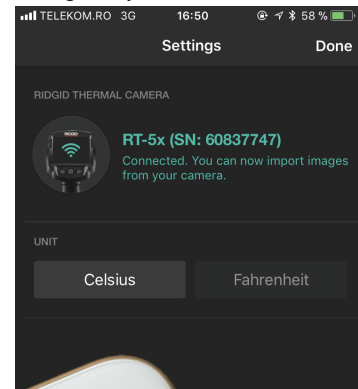
WI-FI CONNECTION - USING THE APP

The RIDGID® Models RT-5x, RT-7x and RT-9x Thermal Imagers includes Wi-Fi technology allowing wireless data transfer to properly equipped smartphones or tablets running iOS or Android operating systems.

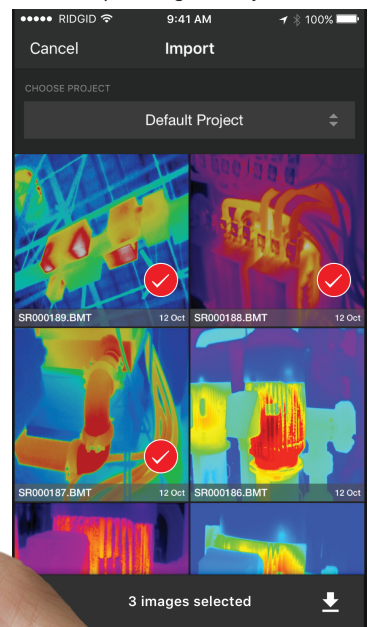


- 1 Download RIDGID Thermal app to your smart-phone or tablet by going to <http://www.RIDGID.com/Thermal>.
- 2 Press the OK button to access the menu.
- 3 Move the joystick down and select Configuration. Then press OK or move the joystick to the right.
- 4 Move the joystick down and select Connectivity. Then press OK or move the joystick to the right.
- 5 Move the joystick down and select Wi-Fi. Then press OK. Tool Wi-Fi is now on, and a Wi-Fi equipped device can find and pair with the tool.
- 6 In the Wi-Fi settings of your device, select desired RIDGID tool. Refer to your device instructions for specific information on how to connect via Wi-Fi. Once connected, the Wi-Fi icon appears on screen.
- 7 After the initial pairing, most devices will automatically connect when Wi-Fi is active and in range. The thermal imager should be less than 33 ft. (10 m) from the device to be detected.
- 8 Follow the app instructions for proper use.

Settings verify connected device



Browse/import images from your camera



RIDGID Thermal's main screen displays images by project. Import new images by tapping the download button.

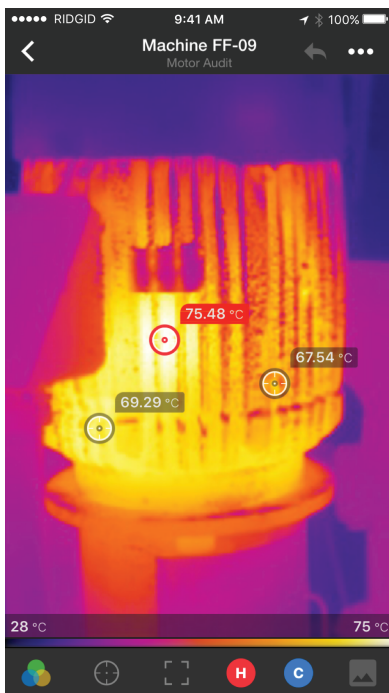


Image Detail screen allows for color palette changes, pinpoint temperature, zoom, high & low temperature and photo mode



iOS



android

iOS is registered trademark of Apple Inc.
Android and the Android logo are trademarks of Google Inc.

